

LU A LINE

A Publication of the Hawaii Water Environment Association

Volume 12 Number 3

Winter 1999

PRESIDENT'S MESSAGE

By Lori Kajiwara, 1999-2000 HWEA President

Brrr!!! Feel the chill in the air... Winter is upon us and winding down our year as well as the mark of the last of 1900's. So, let's party like it's 1999 because **YOU** all worked so hard for the good of the Hawaii Water Environment Association!



Lori Kajiwara

When my Branch Chief Dennis Tulang asked me to serve as Secretary-Treasurer 3 years ago, I thought "Oh my god, you're asking me to serve a position usually reserved for engineers." He quickly dispelled my fears saying, "I served as President years ago." In that case, if he could... well, I said I'd do my best.

As your 1999-2000 President it has been an honor and privilege to serve you all! I have met many people who were once just names on a roster and attended luncheons with other people in the industry. I had the opportunity to attend the WEF Conferences experiencing a world of people concerned with proper wastewater treatment and disposal. It was awesome in New Orleans at WEFTEC 1999!

Much Mahalo for the advice and company at WEFTEC to RM Towill's **Leighton Lum & Walter Chong**; Belt Collins & Assoc.'s **Larry Agena & Leland Lee**; Brown & Caldwell's **Eassie Miller & Peter Ono**; Harry Funamura Kauai County; **Stephen Ching** C&C of Honolulu; and **Denis Lau** of the Clean Water Branch and **Dennis Tulang**. Leighton served as this year's Past President and my mentor (thanks for the invite to the party!).
Congratulations to the "Kauai Nitrifiers" Captain

Matthew Louis, Eric Moriguchi and Subs **Darren Nonaka** and **Guy Moriguchi**, (**Ken Shinsato** and **Clifford Keiger** could not make it) for representing Hawaii at the Operators Challenge placing 27th out of 44 teams. Although it was a grueling 3 event challenge, the guys did terrific! **Grant Moriwaki** our PWOD Representative kept the men relaxed and cheered them on in the events. Thank you for sticking with it!

The game is on as Pretreatment Committee Co-Chairpersons **Dwight Nakao** and **Ken Kawahara** set up for the Pretreatment Workshop for April 10 - 14, 2000. It's being planned for Maui with HWEA and EPA participation covering pretreatment, industrial user classification and FOG (fats, oils and grease).

Thanks to **Tina Nakasone** and her Newsletter Committee who produce a timely newsletter with articles, photos and advertisements to keep it going throughout the year.

Hope you all enjoyed the Sanitary Sewer Overflow (SSO) Workshop which was previously held on November 19 on Maui. **Roger Babcock** and his Research Committee worked hard on the workshop and had a full agenda planned for the participants.

Robin Matsunaga will start setting up for the new Legislature Session as he heads the Government Affairs Committee.

Congratulations to **James Honke** as his term as

(Continued on page 2)

PRESIDENT'S MESSAGE

(Continued from page 1)

WEF Executive Committee Member is over. He has offered guidance and experience to our ever growing organization.

The Water Reuse Committee Co-Chairs **Eassie Miller** and **Victor Moreland** are busy working on their Water Reuse Conference to be held either September 7 & 8 or 14 & 15, 2000 at the Keauhou Hotel, Hawaii. They are also hoping to host the AWWA - WEF Conference here in Hawaii in 2002. Meanwhile, Vic is busy pulling double duty as our National Director.

The Collection Systems Committee Co-Chairs **Jon Nishimura** and **Tina Ono**, are looking for members who can bring new ideas and concerns to the committee.

Please welcome **Russell "Turd Master" Okita** of Engineering Concepts Inc. who has begun upgrading our website and will be improving it as we move into the worldwide web of internet surfing. Check us out at <http://www.hwea.org>. Comments can be sent to hweainfo@lava.net.

Thanks to Laboratory Committee Chair **Barney Asato**, Student Affairs Committee Chair **Ivan Nakatsuka**, Safety Committee Chair **Dan Peters** and WEF Regional Director **Allen Perry** for serving another great year for the HWEA and keeping me and YOU up to date.

Public Education Committee Chair **David Nagamine** will be retiring from his position and is looking for a new chairperson. If you are interested in continuing the goal of promoting our "Water Recycling in Hawaii" video in Hawaii schools, please don't hesitate to join us. We need YOU! Thanks to David and Steve the video is being seen throughout Hawaii.

We've experienced many changes and ventured to new and different avenues along the way. Our **Annual HWEA Convention** is now scheduled for **Mon-Wed June 5-7, 2000** at the **Neal Blaisdell Center Arena** where we hope to have

In This Issue of the Lua Line Volume 12, Number 3

	pg
President's Message	1
The Secretary-Treasurer's Report	3
News from the National Director	3
PWOD News	5
2000 Operations Challenge	6
Laboratory Committee	7
Membership Committee	9
Conference Committee	11
Reflections on WEFTEC	12
Government Affairs Committee	14
Collection Systems Committee	16
Pretreatment Committee	17
Water Reuse Committee	18
Public Education Committee	24
HWEA/WEF Calendar of Events	20
HWEA Specialty Committee Rosters	21
HWEA BOD & Specialty Committee Chairs	22
1999 Winter Job Bank	23

a bigger and better Exhibition Area and roomier conference breakout session rooms. Conference Co-Chairs **Kevin Nakamura** and **Audrey Pak** took many notes at WEFTEC and will be incorporating many of the ideas into our own conference.

And we are currently looking for a new Membership Chair, Kevin has been chairing this committee as well as tackling the Conference Committee with Co-Chair Audrey. He needs a well deserved break.

Much mahalo to Vice President **Lance Manabe**, the MAN-abe behind the scenes. He has kept us well fed and well prepared for all the changes and additions to our organization. Thank you Lance for all your support and organizational help. As my term ends and Lance takes over as year 2000 President, I wish him well and ask you to support him and continue your work with the year 2000 Board of Directors, Officers and Committees.

If YOU are interested in joining our organization or joining a committee, please call Sec-Treasurer **Steve Parabolicoli** at phone 270-7417 fax 270-7425 or email parabolicoli@sportsmail.com or for national updates <http://www.wef.org>. Steve has

(Continued on page 3)

NEWS FROM THE NATIONAL DIRECTOR

Victor Moreland, National Director
Ph. 1-808-836-6919, Fax 1-808-833-2068

REPORT ON BOARD OF DIRECTORS ACTIVITIES AT WEFTEC '99

Awards Guidelines

The Awards Committee chaired by Ken Kerri submitted their award nominations for the Bedell, Hatfield, Burke, and Laboratory Analyst Awards to the Board of Directors to affirm the Member Associations' nominations (as suggested by James Honke last year). Affirmed as part of the Consent Agenda.



Vic Moreland

Member Association Membership

China (Water Industry Association, China Civil Engineering Society), Mexico (Sociedad Mexicana de Aguas de Oriente, A.C.), and Turkey (Water Environment Association of Turkey) were all approved for Member Association status as part of the Consent Agenda.

Corresponding Association Membership

Indonesian Society of Sanitary and Environmental Engineers was approved for Corresponding Association status as part of the Consent Agenda. (If you would like more information on Corresponding Association refer to page 18 of your 1999 WEF Yearbook.)

Petition for Student Chapters Charters

Kentucky-Tennessee Water Environment Association submitted for Murray State University, Michigan Water Environment Association submitted for Delta College, Water Environment Association of Ontario submitted for Mohawk

(Continued on page 4)

PRESIDENT'S MESSAGE

(Continued from page 2)

kept our finances balanced, and our BOD Minutes accurate and distributed on a timely basis! Thank you for your great work!

And thank you **Members** for your support and kind words of encouragement. Without your membership and participation in the events, meetings, workshops and other activities that interest you, we would have no reason to be officers. From reading this newsletter to helping plan a workshop, each and everyone of you contribute to our cause of protecting our precious water resources and environment for future generations.

This experience has been challenging but all the while fun. And it has enlightened me as we move our water world into the year 2000! Hope you all had a great 1999 and a warm holiday season. Good luck, good health and good fortune in year 2000! Let's ride the wastewater wave together into the new year!

*Aloha,
Kaj*

Secretary-Treasurer's Report

as of October 31, 1999

Bank of Hawaii Accounts	
Member Associations	\$5,285.60
Merrill Lynch Accounts	
Member Associations	\$21,052.19
Conference	\$28,974.91
Petty Cash	\$92.50
TOTAL	\$55,405.20

NEWS FROM THE NATIONAL DIRECTOR

(Continued from page 3)

College, and Water Environment Association of Texas submitted for Texas Tech University (Lubbock). They were all approved for Student Chapters as part of the Consent Agenda.

Financial Management

The Lang Group was retained again (since 1992) to provide auditing of the Federation's financial records as part of the Consent Agenda.

Partnering Agreements

Under Rhonda Harris, WEF continued its program to establish partnerships with other organizations with goals and objectives similar to WEF's to work together to achieve improvements in and to protect our water environment. This year an agreement was signed between WEF and the Association of Metropolitan Sewerage Agencies (AMSA) to continue the collaborative efforts and maintain a strong partnership.

Constitution and Bylaws

A Life Member will only have a years of membership (35 years) criteria now. However, age (65 years) will be the criteria for dues (65 and older no dues and less than 65 1/2 dues).

Officers Election

The following were elected to serve in 1999 - 2000:

- President - Albert W. Goodman
- President-Elect - Joe C. Stowe, Jr.
- Vice President - James H. Clark
- Treasurer - Pradeep Kharé
- Director-at-Large - Neal E. Armstrong
- Director-at-Large - James M. Force
- Immediate Past President - Rhonda E. Harris

Treasurer's 1998 Report

In summary, the current financial condition of the Federation is sound and well managed. As stated in James Honke's report last year, the WEF liquid reserves are holding well at over 22 percent (meeting the established goal of 20 percent).

Task Force Reports

The Millennium Task Force (started last year '98)

was charged with anticipating the future in order to help launch us into the next century. Some of the future trends identified: continued importance of clean water and its increasing scarcity, increasing electronic technology in our business, the continuation of the shrinking world (global relationships), more interaction with water related organizations, and an increasing need for sound, scientific research.

Small MA Task Force (appointed in 1997) was charged to evaluate methods for strengthening and supporting small MAs, through the use of paid staff and other means; develop recommendations and implementation criteria as appropriate. They recommended that WEF place a high priority on the growth and development of the small MAs through a planned program of services designed to strengthen them. Year 2000 would enhance small MAs capabilities for strategic plan development, budgeting, membership recruitment and retention, conference and meeting planning, and planning an implementing joint activities with other organizations.

1999 - 2000 Committee Chair/Vice Chair and Management Committee Appointments

There are almost 50 committees that had their chairs and vice chairs confirmed. These committees make up five different groups: Management, Conference/Publications, Member Services, Operations/Education, and Technical. Management Committees include: Executive Committee, Awards Committee, Constitution and Bylaws (James K. Honke - member), Long Range Planning, Nominating Committee, Policy Advisory Committee, and the Sunset Review Committee.

2000 Budget

The board approved the proposed budget of slightly over 20 million dollars which included income sources from: advertising, memberships, publications, conference, and other small sources and expenses for: operations, publications, and conference on-site costs.

PWOD NEWS

Grant Moriwaki, PWOD Representative
Ph. 1-808-681-3138, Fax 1-808-681-5459

The operations challenge had 44 teams this year and was held in New Orleans. The four members of the Kauai Nitrifiers team representing Hawaii were Guy Moriguchi, Eric Moriguchi, Matthew Louis, and Darin Nonaka. This is their third trip to the national competition and this year they placed 27th.



Grant Moriwaki

On November 13, 1999 the annual softball tournament was played in Hilo. Five teams

participated, a Kauai team, Maui team, Hilo team, and two Honolulu teams. The Honolulu Collections and Maintenance team beat the Kauai team two games in a row and won the 1999 championship.

I would like to thank all of the teams and people who helped make the tournament a success in Hilo. The 2000 softball tournament will be held in



Ask for details!

Grind HogTM

PUMP PROTECTION

GRIND HOG COMMINUTORS *forage*

24 hours a day on Municipal Sewage and the **debris** carried with it into Pumping Stations & Treatment Plants throughout North America - week after week, year in and year out.

- Tough, Rugged, Reliable & Affordable
 - Low Maintenance Requirements & Expense
- Confined Space entry a problem???*

Our Auto-Coupling & Kwik-Lift Wet Well Removal Systems are the answer!!!

G.E.T. INDUSTRIES INC.

P.O. Box 640, Brampton, Ontario L6V 2L6
 Tel: (905) 451-9900 • Fax: (905) 451-5376
 Website: www.grindhog.com
 E-mail: got@grindhog.com



2000 OPERATIONS CHALLENGE May be HWEA's Last!

The HWEA Executive Committee is considering removing the Operations Challenge event from the annual HWEA conference. The committee is discouraged by the low number of team entries and feels there is not enough interest in the event.

In the past, the Operations Challenge drew at least four teams to the HWEA conference. However, in recent years, less than four teams have been entering and only two teams competed in 1998. The Executive Committee feels that the money and human resources used to organize and run the event can be used most effectively if at least four teams enter the competition. If the Operations Challenge is not conducted, another event which would hold more interest for the P W O D membership could be held.

This year, in an effort to encourage participation and increase visibility of the event, the local Operations Challenge will be held within the HWEA annual conference exhibition area. This venue will help showcase the talents of our HWEA operators to a wider audience. This also gives more people the opportunity to cheer for their favorite team during the competition.

After the winning team is selected, HWEA sends the team to WEFTEC to represent the state of Hawaii at the national competition. The national

competition is North America's preeminent showcase of the skills of wastewater collection and treatment personnel. This is the 12th year for the Operations Challenge at WEFTEC. A total of forty teams square off in two divisions to compete in five equally weighed skills tests: collection systems, laboratory analysis, maintenance, process control, and safety. The results of this year's competition can be found at WRF's website (<http://www.wef.org>).

The deadline for the 2000 HWEA Conference has not been set yet but according to Grant Moriwaki, PWOD Representative, the deadline will probably be around the end of February or early March. Due to the amount of equipment and



The Kauai Nitrifiers represented HWEA at WEFTEC and placed 27th out of 44 teams

c o o r d i n a t i o n required for this event, the sooner interested teams contact Grant or any member of the Executive Committee the better. Please see the back of this issue for the contact numbers of the Executive Committee. If you are interested in joining a team and have trouble finding one, the Executive Committee will be able to assist you.

Any comments or suggestions regarding this event can be sent to any of the Executive Committee members.

LABORATORY COMMITTEE

Barney Asato, Committee Chair
Ph. 1-808-847-8356, Fax 1-808-842-1301
Anita Fernandez, Vice Chair
Ph. 1-808-879-6109, Fax 1-808-879-6369



Barney Asato

results for each parameter tested; the two results were averaged to provide a single number for statistical evaluation. Lab 11 used the multiple tube fermentation technique and reported MPN estimates that were excluded from statistical evaluation.

COMMITTEE RELEASES RESULTS OF PERFORMANCE EVALUATION STUDY

Eleven labs participated in Performance Evaluation (PE) Study 5 with the majority reporting membrane filter results for all three microbial parameters. Lab 5 reported a laboratory accident and failed to provide results. Lab 6 reported positive verification of enterococcus and *C. perfringens* colonies at 100%. Lab 7 allowed two different analysts to conduct tests and reported two

Overall, the quality of data is marginally acceptable. In general, worksheets and chain of custody forms were properly completed and submitted. Labs correctly calculated results using raw counts meeting the 20-60 colony count range per membrane filter criterion. Lab 8 did not meet the 20-60 colony count criterion for *C. perfringens*.

(Continued on page 8)

Results of Analyses Microbiology Performance Evaluation Study 5 Voluntary Inter-Lab Split Sample Program

October 20, 1999

Membrane Filter Method CFU/100 mL

Lab	Enterococcus	Fecal Coliform	<i>C. Perfringens</i>
1	440,000 (mEI)	10,000,000	21,000
2	270,000 (mEI)	11,000,000	29,000
3	410,000 (mE/EIA)	7,100,000	24,000
4	440,000 (mEI)	-	21,500
5	L.A. ¹	L.A.	L.A.
6	440,000 (unspecified)	-	23,000
7a	440,000 (mE/EIA)	-	20,000
7b	340,000 (mE/EIA)	-	21,000
8	280,000 (mE/EIA)	12,750,000	11,500
9	500,000 (mE/EIA)	14,750,000 (w/out ros. acid)	14,000
10	220,000 (mEI)	12,000,000	32,000
11	80,000 (MPN)	1,700,000 (MPN)	-

¹Laboratory accident.

(Continued from page 7)

Labs 4, 6, and 10 exceeded the 6 hour transport and/or 2 hour laboratory holding limits. Also, temperature control bottles were missing which are needed to determine appropriate transport temperature of >0 to 10EC. A few results were reported to three, four or five significant figures which overstates the implied accuracy of the membrane filter method. Some labs consistently rounded up a digit while others rounded to the nearest even number.

The statistical evaluation of results for PE Study 5 provides evidence of marked improvement over previous studies. The percent coefficient of variation or relative standard deviation, which measures the dispersion of a data set, has generally improved for each parameter with every subsequent PE study.

Laboratories reporting results somewhat above or below the group median are encouraged to conduct

a review of their quality control records and dialogue with peers from other participating labs. Problems "fleshed out" in previous studies include 1) importance of controlling sample transport temperature to >0-10EC, 2) taking care to avoid over-heating or boiling-over culture media which can result in lower bacterial recoveries, and 3) using loose-fit culture dishes for the *C. perfringens* test and tight-fit culture dishes for the enterococcus and fecal coliform tests to optimize bacterial recoveries.

Our next split will be in April 2000. I'll send out a reminder notice a month in advance. If you know of any other labs who might wish to participate, please have them contact me at 847-8356. Thanks again for participating and helping to improve the quality of environmental laboratory data in Hawaii.

WEFTEC AD

MEMBERSHIP COMMITTEE

Kevin Nakamura, Committee Chair
Ph. 1-808-847-8374, Fax 1-808-848-6532
Jay Nakandakare, Vice-Chair
Ph. 1-808-847-8330, Fax 1-808-848-6532

Greetings
 fellow
 H W E A
 members.

As you read this issue of Lua Line, we will have entered the 21st century - the start of the New Millennium...or have we? Some say the start of the millennium occurs at the end of the year 2000!! I say let's celebrate twice just to be safe.



Kevin Nakamura

We are in the early stages of the new recruiting period for membership into the WEF or locally the HWEA. The new member recruitment period runs from September 1999 to August 2000. As with past years, the more new members you recruit; the more fabulous valuable prizes you can earn. Recruiting a potential member is as easy as having the person fill out an application form.

Currently, we have 404 member in the HWEA who are distributed into the following six (6) categories.

Category	Members
Active	232
PWOD	151
Corporate	10
Life	5
Student	5
Retired	1
Total	404

I would like to take this time to announce that by the time you read this issue I will have stepped down from the Chair of the Membership Committee to focus on the upcoming conference (for which I am a co-Chair) and with details relating to my work. I have enjoyed the past year as the Membership Committee chair. I learned a lot about the workings of the HWEA, made some new friends and caught up with others along the way. I would encourage anyone interested in getting involved in the HWEA to accept the Membership Chair. The duty load as assigned are moderate and all that is required is a good sense of responsibility and organizational skills. A computer with Internet capabilities would be helpful.

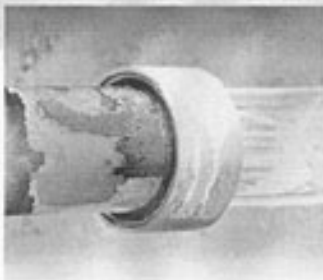
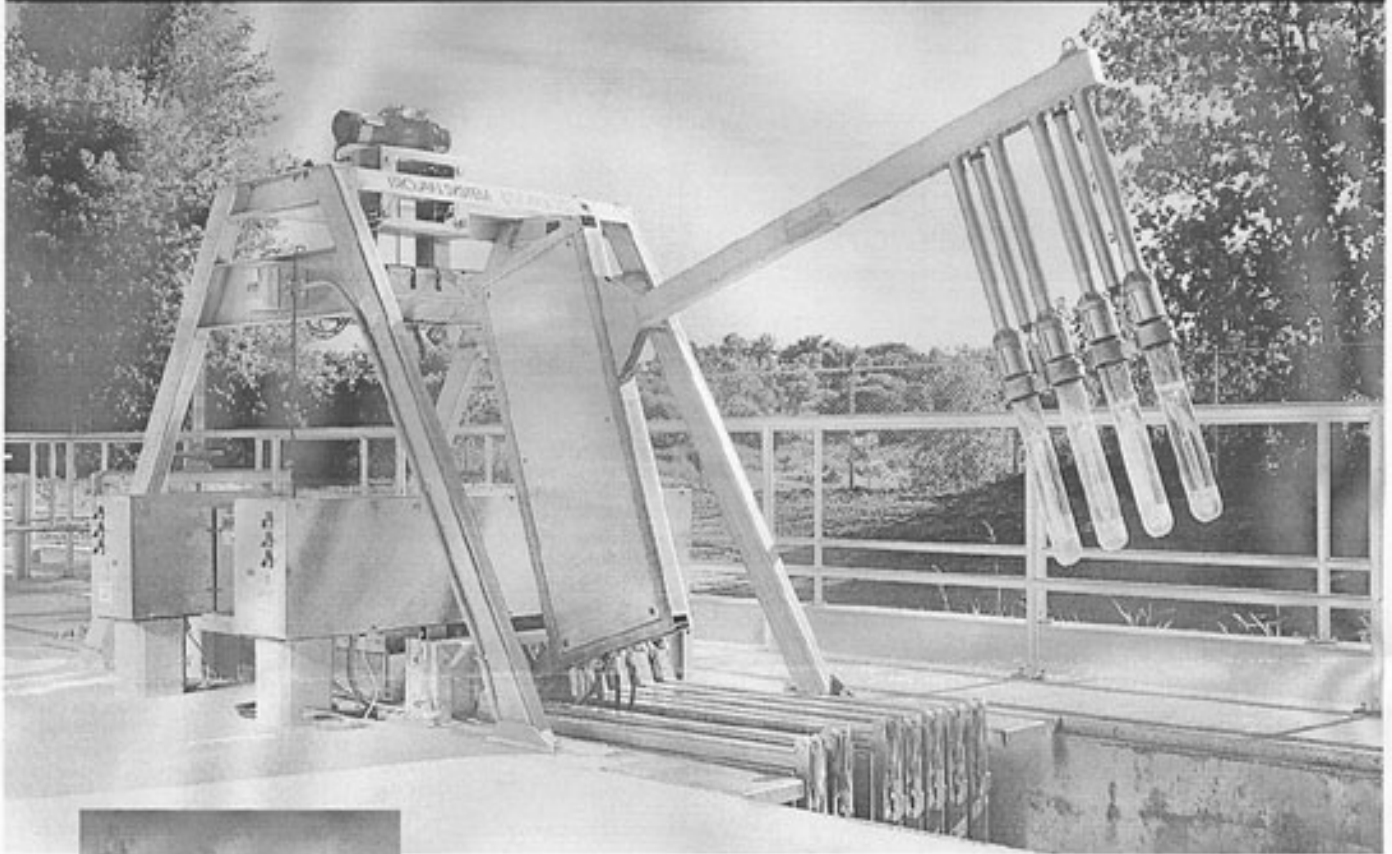
If you have any membership needs or are interested in accepting the Membership Chair, you can call either Lance Manabe or Lori Kajiwara for any assistance.

Thank you for the opportunity to serve as the Membership Chair and Have a Safe, Happy and Prosperous New Year.

MEMBER SERVICE E-MAIL

msc@wef.org	address changes, membership inquiries, subscription inquiries, or anything related to membership
pubs@wef.org	order publications, check on order status, price quotes
confinfo@wef.org	registration questions and requests for conference information
techniq@wef.org	technical questions
webfeedback@wef.org	your comments

Self-Cleaning UV



Trojan...

the revolutionary System UV4000™ will change the way you think about wastewater disinfection

Trojan System UV4000™ incorporates high intensity UV lamps in a controlled geometry, variable UV lamp output precisely matched to wastewater UV demand, modular open channel lamp configurations and our innovative self-cleaning system. The use of high intensity UV lamps dramatically reduces the total number of lamps required, resulting in reduced space requirements.

System UV4000™ is engineered to meet the most demanding performance requirements, whether the application be primary or secondary effluents, combined sewer overflows, stormwater or high level disinfection.



Trojan Technologies Inc.

World Leader in UV Disinfection Systems

www.trojanuv.com

Head Office: 3020 Gore Road, London, Ontario, Canada N6V 4T7 Tel: (519) 457-3400 Fax: (519) 457-3030

California: 2050 Peabody Road, Suite 200, Vacaville, CA, U.S.A. 95687 Tel: (707) 469-2680 Fax: (707) 469-2688

Hawaii: Hawaii Engineering Services, 2234 Hoonee Place, Honolulu, HI 96819 Tel: (808) 262-7773 Fax: (808) 252-7768 E-mail: hespumps@aol.com

CONFERENCE COMMITTEE

Kevin Nakamura, Conference Co-Chair

Ph. 1-808-847-8374, Fax 1-808-848-6532

Audrey Uyema Pak, Conference Co-Chair

Ph. 1-808-847-8308, Fax 1-808-848-6532

Aloha fellow HWEA members, I hope the New Year - 2000 is starting off well for you. The **22nd Annual HWEA Conference** is only 4 months away; so mark your calendars for **June 5-7, 2000!**



Kevin Nakamura

The first thing you will notice about this year's conference is the AAla Carte@ registration fees on the pre-conference and conference registration forms. This will allow greater flexibility in choosing how you want to experience the conference . . . that is whether to attend or not to attend the pre-conference workshop(s), luncheons, and social events. We will also try an ambitious event, in providing all technical proceedings on CD-ROM; one complimentary copy per conference registrant. And be sure not to miss the luncheons and evening social events . . . either the Tuesday or Wednesday Luncheon



Audrey Uyema Pak

will be a buffet, the Presidents Reception on Tuesday evening will return to the Waikiki Yacht Club, and the Banquet on Wednesday evening will be at Pacific Beach Hotel=s Grand Ballroom.

To help each Wastewater professional prepare to - **AFace the Wastewater Environment Challenges of the New Millennium@** the Conference Committee is working on presenting

the best HWEA conference possible. This years conference will be at the Neal Blaisdell Center and will feature the Expo in the 65,000 sq. ft. Exhibition Hall and interesting Technical Sessions in the 2nd floor meeting rooms. The Sessions will focus on water and bio-solids reuse, disinfection, and odor control as well as collection and treatment process design, and management and administration of environmental facilities.

The Conference Committee continues to welcome questions, comments, suggestions for topics and most importantly volunteers to make the 22nd annual HWEA Conference a success.

Also, please welcome two new Conference Committee members, Mr. Travis Hylton of GMP Associates (Program Co-Chair) and Mr. Kevin Kashimoto of the City and County of Honolulu (Exhibit Co-Chair).

SERVICES AND PRODUCTS TO ENHANCE THE MANAGEMENT OF WASTEWATER COLLECTION AND WATER DISTRIBUTION SYSTEMS

The world leader in conducting collection and distribution system programs to build physical asset inventories, assess infrastructure condition, locate specific defects and leaks, and execute the repairs needed to achieve optimum system performance.

Specific Services Include:

- Long-term and temporary flow monitoring
- Sewer system evaluation surveys
- Repair and rehabilitation
- Leakage and accountability programs
- Water meter testing and calibration
- Comprehensive infrastructure management software

For more information contact:

Jeff Berk
 7350 Opportunity Road
 San Diego, CA 92111
 Phone: (619) 571-0945
 E-mail: jeff.berk@adsew.com

ADS
 ENVIRONMENTAL SERVICES

Reflections On...



BUSY, BUSY, BUSY!

By Audrey Uyema Pak
1999 HWEA Conference Co-Chair

WEFTEC'99 attendees were busy, busy, busy! Busy to register quickly; busy consuming/disseminating the latest technical information; busy using their EXPOCARD and then seeking out the exhibitor among the 800+; busy competing in or observing Operations Challenges; busy networking; busy touring treatment facilities; busy walking or waiting; and lastly, busy enjoying New Orleans. To manage all this "busy-ness" was the conference staff (professionals and volunteers), speakers, poster entrants, and exhibitors...eager to accommodate and to provide all with the latest technical or non-technical information and ultimately, the best conference experience.

FROM WASTEWATER SEMINARS TO ALLIGATOR SAUSAGES

By Kevin Nakamura,
1999 HWEA Conference Co-Chair

WEFTEC...the name alone conjures images of a tremendous and overwhelming event! It is billed as the pinnacle of Wastewater Technology and Exhibits. A venue where information is overflowing and products and equipment of every type are on display. And with all that, it would take a monumental effort to be able to see it all.

Everything you could want or need to know about the wastewater field can be found at the national conference. It offers workshops and technical sessions of various topics to help hone process operations skills, keep managers abreast of new strategies and issues, assist lab technicians stay up-to-date with new techniques and analytical methods and help maintenance personnel keep abreast with the latest technologies in wastewater equipment and its repairs. Within the national



conference itself, the two most useful and invaluable aspects can be found. 1) The opportunity to network with other people in the wastewater field (where you often find they have the same problems and issues as you do) and 2) to be able to question vendors regarding problems on particular equipment. The people coordinating the conference are well organized and have everything down to a science. They have thought of everything an attendee may want to attain information for. For instance; there are the information booths, WEF bookstore, member

(Continued on page 13)

FROM WASTEWATER SEMINARS TO ALLIGATOR SAUSAGES

(Continued from page 12)

services (where you can purchase souvenirs) and onsite registration booths. A site to Fax or E-Mail anything you need to send, various displays of related and associated organizations and topics and aids to help speed you through your conference experience, there are electronic devices / methods for: communicating with fellow attendees, information retrieval and individually issued I.D type cards which the vendors can Aswipe@ through a reader to be able to send you requested information.

Anyone who thinks that the local HWEA Conference cannot compare to the national conference should realize one very important point. While both conferences have a lot to offer, the only difference between WEFTEC and the HWEA Conference is...MONEY! WEFTEC just has a much larger budget to put-on a Conference of that magnitude. But if you step back and look at the overall conference differences, that=s all that separates the two - the size. And in this case, size does NOT matter. Our local conference offers the same main components as the national conference. We offer workshops, technical sessions and displays by vendors and companies of various equipment and technologies. The local conference is prepared by dedicated people, who want to help present the best possible conference for the advancement of wastewater technologies for the operators, lab technicians, maintenance personnel and managers of wastewater treatment facilities.

The one major factor which can not be duplicated is the actual location of the conference and the different things that part of the country has to offer. This years national conference was held in New Orleans, famous for its Cajun and Creole foods...Jambalaya, Gumbo, Grits, Alligator Sausage and good Seafood! New Orleans is the home of Jazz music and the Super-Dome. There are Casinos (on River Boats and on land), Museums, Parks, Zoo=s and Aquariums; as well as Tours of the Swamp and their above ground

cemeteries. And there was a street in the French Quarter; I think it was called Bourbon Street, but I was too busy attending the conference to check it out!

Cheering on our Operations Challenge Team at the national level, the fellowship with the other Hawaii attendees, the networking and information gathered, and the sights and sounds of New Orleans added to the WEFTEC experience.

Experiencing a WEFTEC is different for each individual. From my conversations with other attendees...you get out of it what you want. Individual perception of what was outstanding or important varies and cannot be fully relayed verbally. You need to experience it yourself. If anyone is thinking about going to WEFTEC, my advice would be to - Go For It!!!



CIVIL ENGINEERING AND PLANNING
WASTEWATER AND WATER TREATMENT
CONSTRUCTION MANAGEMENT SERVICES

Hawaii Pacific Engineers, Inc.

1132 Bishop Street, Suite 1003

Honolulu, Hawaii 96813-2830

Phone: (808) 524-3771

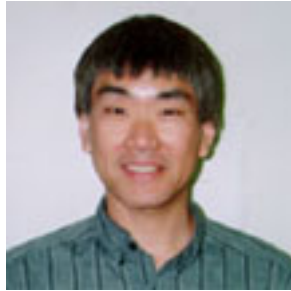
Fax: (808) 538-0445

GOVERNMENT AFFAIRS COMMITTEE

Robin Matsunaga, Committee Chair
Ph. 1-808-521-3051, Fax 1-808-524-0246
Walter Billingsley, Committee Vice Chair
Ph. 1-808-521-5361, Fax 1-808-538-7819

The Government Affairs Committee (GAC) of HWEA helped facilitate the passage of two wastewater-related bills through the legislature in the past year.

The first bill was a joint effort between the State of Hawaii Department of Health (DOH) and the City & County of Honolulu on the definition of recycled water. This would lessen the potential for any legal obstacles that could arise from ponded R-1 reclaimed water.



Robin Mastunaga

The second bill was the passage of a bill establishing a separate fund for the funding of an operator certification fund. We were also able to state our objections to a bill that may preclude future limitations on cesspools. We were able to be much more effective this year because of the assistance of a legislative bill tracker, jointly funded by the CECH and other engineering societies.

There are no issues that we are currently aware of that need to be addressed legislatively this year. We will continue to consult with the environmental committees of the legislature and to watch for bills originating elsewhere to determine whether we should support or object to specific legislature. We would welcome input from our membership on potential issues or bills for consideration by our executive board.

One of the major regulatory changes that we anticipate in the coming year will be an

amendment to the DOH Hawaii Administrative Rules for Chapter 11-62, Wastewater Systems. These amendments may include:

- changes to the preamble encouraging the reuse of wastewater and sludge;
- definitions and performance parameters for the reuse of wastewater;
- time limits on DOH approvals;
- engineer's certification that facility operations are consistent with design;
- limitations on new cesspools;
- new subchapters on sludge reuse and sludge permits.

These amendments are currently undergoing legal and other policy reviews by other state government departments, thus the date of the draft promulgation and public hearings are still uncertain. The DOH is hoping that it will be able to promulgate draft rules by this coming Spring. Since these rules have a major impact on our work, our membership should watch for any announcements on its availability and public hearing dates. Please forward any comments that you may have regarding these draft rules or any other suggested regulatory amendments to us for consideration by our executive board.

FUKUNAGA & ASSOCIATES, INC. 1388 KAPIOLANI BLVD.
 2nd FLOOR
 HONOLULU, HAWAII 96814
 PH. (808) 944-1821
 FAX (808) 946-9339

Consulting Engineers



Don't assume open cut is less expensive than Insituform.

Today, Insituform is an affordable choice for day-to-day sewer rehabilitation.



Of course Insituform is *less disruptive* than digging up and replacing old sewers. But did you know it's often *less expensive*, too?

Drawing on our 27 years in the pipe rehabilitation business, we have expanded the range of problems we can solve and lowered our costs. The result: you can now rehabilitate more pipe for your dollar than ever before.

What's more, when you choose Insituform, you still get the most reliable products on the market, with a proven 50-year design life. You get experienced pipe rehabilitation professionals who take complete responsibility for your solution.

Now it all just costs less.

So why dig?

Call Insituform today **800-234-2992**

www.insituform.com



COLLECTION SYSTEM COMMITTEE

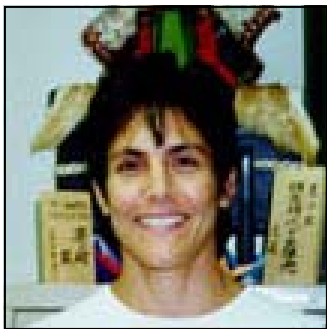
Jon Nishimura, Committee Co-Chair
Ph. 1-808-944-1821, Fax 1-808-946-9339
Tina Ono, Committee Co-Chair
Ph. 1-808-523-4067, Fax 1-808-523-4642

HWEA has a new specialty committee that focuses on wastewater collection and transport systems, and is actively seeking members who would like be involved in the committee's development. Among the areas of interest that the committee will be involved in are collection system operations and maintenance, collection system planning and design, national and local regulatory policies and requirements, and new technologies for system construction and rehabilitation.



Jon Nishimura

The committee is currently involved in a joint effort with the City & County of Honolulu, initiating a public education program targeting improper use of the collection system by private users. Improper usage of the City's wastewater



Tina Ono

collection and treatment system causes operational problems including overflows and spills of raw sewage onto streets, and into streams and beaches. The problem is often caused by the public who may unknowingly discharge extraneous substances or excessive flows into the sewers.

Typically, during dry weather, spills occur when blockages in the sewer lines form, often as a

result of accumulation of grease discharged from homes and/or commercial establishments, or by extraneous material such as diapers, towels or sediment flushed into the sewer system. During storm events, rain water is often drained into the sewer system by uninformed residents who don't understand that the sewer system was never intended to handle storm runoff. As a result, the sewer system is severely overloaded resulting in manhole and pumping station overflows, potentially sending untreated sewage into public areas. Typical examples of rainwater entering the sewer system are roof gutters, or patio and garden drains connected to the sewer lateral.

If these sources of extraneous flows are not controlled, the City's sewer system must be oversized to contain these wet weather flows or be subject to fines and penalties assessed by regulating agencies such as the United States Environmental Protection Agency (USEPA) or State of Hawaii Department of Health (DOH). In any case, it results in higher costs to the public, both economically and environmentally.

If the public can assist the City by self monitoring their use of the wastewater collection system, we can all benefit by having less system failures and lower sewer user charge rates. By informing the public of how the sewer system works, why the system typically fails, and how these failures affect public health as well as their pocketbooks, HWEA and the City hope to encourage proper use of the wastewater system. The committee is in the process of soliciting funding for the production of a public education video for broadcasting on commercial television and will be needing member support in this project.

ANY MEMBERS OUT THERE THAT ARE INTERESTED IN PARTICIPATING IN THIS NEW COMMITTEE SHOULD CONTACT JON NISHIMURA AT 944-1821 OR TINA ONO AT 523-4067.

PRETREATMENT COMMITTEE

Dwight Nakao, Committee Chair
Ph. 1-808-270-7988, Fax 1-808-270-7425
Ken Kawahara, Committee Vice Chair
Ph. 1-808-527-5377, Fax 1-808-527-6214

HAPPY NEW YEAR!

The Pretreatment Committee had a very successful beginning last year and we're looking forward to a productive and challenging year. As soon as we got off the ground (summer '99) with this new Pretreatment Committee, our parent affiliate, WEF, was contacted and asked about pretreatment training courses. WEF was excited over the opportunity and concurred with EPA to provide training courses in Hawaii. WEF and EPA immediately provided logistical details for two pretreatment training courses.



Dwight Nakao

Because of scheduling constraints and anticipated attendance with these types of training courses, the decision was made to provide a combined pretreatment training course. This meant instead of having two separate courses, one on basic pretreatment and the other on advanced pretreatment topics, there will only be one pretreatment training course. This training course would cover both basic and advanced topics that are taught every year across the continental United States.

The committee members were just as excited as WEF to be able to provide this educational opportunity for our State or for any interested people from out of state. We have decided on the dates of April 10 & 11, 2000 to do this pretreatment training course. In conjunction with the training course, WEF asked the HWEA

Executive Board to come up with another topic that might be unique in Hawaii. WEF wanted to consider an additional day of training in another topic area, since they were unsure what kind of attendance they would get from providing only one pretreatment training course.

It was decided that Hawaii is plagued with problems associated with fats, oil and grease and training in this area would be welcomed. WEF and EPA agreed with HWEA's response and decided to provide a fats, oil and grease training course. This course will be held on April 12, 2000 and will cover general background, the requirements on discharge, grease interceptor requirements and proper record keeping on fats, oil and grease.

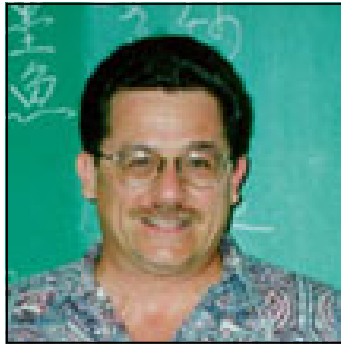
The Pretreatment Committee also attended the City & County of Honolulu's Department of Environmental Services, Division of Environmental Quality presentation on November 23, 1999 discussing a new policy for grease interceptor program compliance. Another goal that will be carried out by this committee will be to compile the various City and County requirements on fats, oil and grease into a handy literature brochure.

To summarize, the Pretreatment Committee is off to a good start and will be providing its first pretreatment training courses. These courses will be held during the week of April 10-12, 2000. For additional information about these training courses, please feel free to contact the Pretreatment Committee. We will also be working on our first brochure summarizing the various jurisdictions around our state, which will explain the requirements on fats, oil and grease disposal. We are also recruiting members who would like to get involved with this new and exciting committee, if you're that person or persons, please give us a call immediately.

WATER REUSE COMMITTEE

Eassie Miller, Committee Co-Chair
Ph. 1-808-523-8499, Fax 1-808-533-0226
Victor Moreland, Committee Co-Chair
Ph. 1-808-836-6919, Fax 1-808-833-2068

Aloha and Happy New Year! The water reuse committee has set the date for the third Water Reuse Specialty conference at September 14 - 15, 2000. The site of the conference is the Aston Keahou Beach Hotel.



Eassie Miller

Robert Miyasaki and his committee are well under way in making this another successful conference. Please contact Robert at 527-5159 with your ideas.

With the support of the executive board, the committee will be joining forces with the reuse

committee of the Hawaii Section of AWWA in pursuing common interest issues. Our first task is to review the proposed legislative reuse package that DOH will be submitting to the legislature.



Vic Moreland

It seems that we are out of the running for the 2002 AWWA/WEF Reuse Conference. It was decided by AWWA leadership to float a trial balloon and combine this conference with two other AWWA specialty conferences in 2002. So now we have 4 years to plan for the 2004 conference.

As reported in the last newsletter, the committee remains ready to serve as we await the release of the next draft to HAR Chapter 62. The DOH is in the process of incorporating parts of the 1993 Water Reuse Guidelines into Chapter 62.

CONGRATULATIONS TO THE PROUD PARENTS!

Evan Mitsugi Yamamoto born on April 15, 1999 at 8 lbs and 0 ounces to Terrie and Doug Yamamoto. This is Terrie and Doug's second child.

Allison Lai Sheng Ching born on September 9, 1999 to Tessa and Colin Ching. This is Tessa and Colin's first child.

MARRIED:
Robin Matsunaga and Cynthia Kaya on October 23, 1999 at the Hale Koa Hotel.

This is the start of the social events column for the LuaLine. HWEA members are encouraged to send in any news and photos regarding marriages, births, promotions, and other newsworthy facts about themselves or other HWEA members. Please send the information to:

HWEA Newsletter Committee
P.O. Box 2422
Honolulu, HI 96804

or e-mail: tnakasone@hawaiiipacificengineers.com

**PUBLIC EDUCATION
COMMITTEE**

**David Nagamine, Committee Chair
Ph. 1-808-527-5368, Fax 1-808-527-6214**

**COMMITTEE DISPLAYS WATER
RECYCLING VIDEO**

The Public Education Committee is continuing to make presentations of the “Water Recycling in Hawaii” video completed earlier this year. Over the last three months, presentations were made at:

- UH Water Resources Research Center Seminar
- Wastewater Operators Sludge Handling Class
- UH Aquatic Pollution Class
- Kihei School PTA
- Maui Community College Microbiology Class
- Iao School 6th Grade Class
- Maui Chamber of Commerce



David Nagamine

libraries on all islands. If you are interested in borrowing the video or would like to make a presentation of the video, please call David Nagamine at 527-5368 or Steve Parabolicoli 270-7426 (Maui).

Mr. Ken Windram of U.S. Filter Operating Services joined the Public Education Committee in September. Ken brings a lot of knowledge on local reuse activities and is in charge of the construction of the Ewa Water Reclamation Facility. Mahalo Ken for volunteering.

Steve Parabolicoli will be presenting the video at the AWWA/WEF Water Reuse Conference in San Antonio in early February 2000. Ten copies of the video were sent to the State of Hawaii Library in September for

presentations at their

WEFTEC Ad

HWEA/WEF CALENDAR OF EVENTS

EVENT	DATE
Winter Lua Line	January 2000
Biosolids 2000: Residuals and Biosolids Management (Boston, MA)	February 27 - March 1, 2000
2nd Annual WEFTEC Asia (Singapore)	March 13-16, 2000
Water 2000: Guarding the Global Resource (Auckland, New Zealand)	March 19-23, 2000
Disinfection 2000: Disinfection of Wastes in the New Millenium (New Orleans, LA)	March 15-18, 2000
HWEA Pretreatment Workshop	April 10-12, 2000
Odors and VOC Emissions 2000 (Cincinnati, OH)	April 16-19, 2000
Spring Lua Line	May 2000
Collection System Wet Weather Pollution Control (Rochester, NY)	May 7-10, 2000
Industrial Wastes Technical Conference (St. Louis, MO)	May 21-24, 2000
Plant Operations and Maintenance Conference (Portland, OR)	June 18-20, 2000
2000 HWEA Conference	June 5-7, 2000
Watershed 2000 (Vancouver, British Columbia, Canada)	July 9-12, 2000
HWEA Quarterly Luncheon	August 2000
HWEA Water Reuse Conference (Hilo, HI)	September 14-15, 2000
Summer Lua Line	September 2000

WATER REUSE 2000 TACKLES INCREASING DEMANDS, LIMITED SUPPLIES

Diminishing water sources, growing populations, and increasing contamination are straining the world's already limited water resources. At Water Reuse 2000, a conference and exhibition to be held January 30 - February 2, 2000 in San Antonio, Texas, water quality professionals discuss how to meet these challenges using the latest innovations and applications in the field of water reuse.

Cosponsored by the Water Environment Federation and the American Water Works Association, the conference includes 12 technical sessions, four workshops, and three site visits. Workshop and session topics include agricultural applications, golf course irrigation, wetlands restoration, public education, regulatory issues, treatment technologies, urban reuse, and international cases studies. Site visits will be made to the San Antonio River Tunnel, Leon Creek Water Recycling Center and San Antonio River Discharge.

WEF RESIDUALS AND BIOSOLIDS MANAGEMENT CONFERENCE TO ATTRACT TOP EXPERTS

"Accomplishments to Date: Opportunities for the Future" will be the theme of the Water Environment Federation's 14th Annual Residuals and Biosolids Management Conference to be held February 27 to March 1, 2000 in Boston, Massachusetts. The conference will be held in cooperation with the New England Water Environment Association and the New England Biosolids and Residuals Association.

Fifteen sessions with more than 90 technical sessions will cover topics such as digestion, dewatering, alkaline stabilization, thermal drying, incineration, land application, and distribution and marketing of biosolids. A special "Hot Topics" session will provide attendees with the most up to date information on national, state, and local regulations. The exposition will feature more than 50 exhibitors.

HWEA SPECIALTY COMMITTEE ROSTERS

COMMITTEE	MEMBERS	
Conference	Kevin Nakamura (Co-Chair)	Audrey Uyema Pak (Co-Chair)
	Tom Myers	Cindy Masuoka
	Mike Nishimura	Craig Chung
	Anna Lee	Wade Thode
	Leland Lee	David Yamada
Constitution & Bylaws	Lee Mansfield (Chair)	Vacant (Vice Chair)
Government Affairs	Robin Matsunaga (Chair)	Walter Billingsley (Vice-Chair)
	Myron Nomura	George Takamiya
Laboratory	Barney Asato (Chair)	Anita Fernandez (Vice-Chair)
	Kurt Chandler	Lyle Shizumura
	Snookie Mello	Wendy Manor
	Kevin Nishimura	Robert Rychlinski
	Myron Honda	Lourdes Vasquez
	Terrence Tanaka	Bruce Zhang
Membership	Kevin Nakamura (Chair)	Jay Nakandakare (Vice-Chair)
Newsletter	Tina Unebasami (Chair)	Greg Chung (Vice-Chair)
	Kristie Ching	Leanne Watanabe
	Suzette Hokama	Jay Stone
Nominations	Leighton Lum (Chair)	
Public Education	David Nagamine (Co-Chair)	Vacant (Co-Chair)
	Roy Abe	Steve Parabolicoli
	Ann Tsuhako	Eddie Eldeen
	Lance Tokuda	Robert Miyasaki
	Grace Tuang Moss	Joe Padron
Research	Roger Babcock, Jr. (Interim Chair)	P.Y Yang
	Roger Fujioka	Dennis Tulang
	Denis Lau	Ross Tanimoto
	Tim Steinberger	Ken Tanno
	Lee Mansfield	Robin Matsunaga
	Ray Matasci	
Safety	Dan Peters (Chair)	
Student Activities	Ivan Nakatsuka (Chair)	
Water Reuse	Eassie Miller (Co-Chair)	Victor Moreland (Co-Chair)
	Kenneth Ishizaki	Ray Matasci
	Robert Miyasaki	Peter Ono
	Elson Gushiken	

1999-2000 HWEA BOARD OF DIRECTORS AND SPECIALTY COMMITTEE

Lori Kajiwara, President*

State of Hawaii, Department of Health
Wastewater Branch
919 Ala Moana Boulevard Room 309
Honolulu, Hawaii 96814
Phone: 1-808-586-4294, Fax: 1-808-586-4300
E-mail: lkajiwara@eha.health.state.hi.us

Lance Manabe, Vice-President*

Department of Design & Construction
City & County of Honolulu, 14th Floor
650 South King Street
Honolulu, Hawaii 96813
Phone: 1-808-523-4551, Fax: 1-808-523-4642
E-mail: lmanabe@co.honolulu.hi.us

Steve Parabolicoli, Secretary-Treasurer*

County of Maui, Wastewater Reclamation Division
200 South High Street
Wailuku, Hawaii 96793
Phone: 1-808-270-7426, Fax: 1-808-270-7425
E-mail: parabolicoli@sportsmail.com

Leighton Lum, Past-President & Nominating-Chair*

R.M. Towill Corporation
420 Waiakamilo Road, Suite 411
Honolulu, Hawaii 96817-4941
Phone: 1-808-842-1133, Fax: 1-808-842-1937
E-mail: llum@i-one.com

Victor Moreland, National Director*

1378 Mahiole Street
Honolulu, Hawaii 96819
Phone: 1-808-836-6919, Fax: 1-808-833-2068
E-mail: vmorelan@hawaii.edu

Grant Moriwaki, PWOD Representative*

Department of Environmental Services
City & County of Honolulu, Honouliuli WWTP
91-1501 Geiger Road
Ewa Beach, Hawaii 96706
Phone: 1-808-681-3138 Fax: 1-808-681-5459

Allen Perry, WEF PWOD Regional Director

Department of Environmental Services
City & County of Honolulu, Honouliuli WWTP
91-1501 Geiger Road
Ewa Beach, Hawaii 96706
Phone: 1-808-681-3138, Fax: 1-808-681-5459

Jon Nishimura, Collection System Co-Chair

Fukunaga & Associates, Inc.

***Board of Directors**

1388 Kapiolani Boulevard, Second Floor
Honolulu, Hawaii 96814

Phone: 1-808-944-1821, Fax: 1-808-946-9339

Tina Ono, Co-Chair

Phone: 1-808-523-4067, Fax: 1-808-523-4642

Kevin Nakamura, Conference Co-Chair

Department of Environmental Services
City & County of Honolulu, Sand Island WWTP
1350 Sand Island Parkway
Honolulu, Hawaii 96819

Phone: 1-808-847-8374, Fax: 1-808-848-6532

E-mail: MDA0094@co.honolulu.hi.us

Audrey Uyema Pak, Conference Co-Chair

Phone: 1-808-847-8308, Fax: 1-808-848-6532

Lee Mansfield, Constitution & Bylaws Chair

GMP Associates, Inc.

1100 Alakea, Suite 1800

Honolulu, Hawaii 96813

Phone: 1-808-521-4711, Fax: 1-808-538-3269

E-mail: gmpassoc@lava.net

Robin Matsunaga, Government Affairs Chair

M&E Pacific, Inc.

1001 Bishop Street, Suite 500

Honolulu, Hawaii 96813

Phone: 1-808-521-3051, Fax: 1-808-524-0246

E-mail: robin_matsunaga@air-water.com

Walter Billingsley, Vice-Chair

Phone: 1-808-539-1452, Fax: 1-808-538-7819

E-mail: walter@beltcollins.com

Barney Asato, Laboratory Chair

Department of Environmental Services

City & County of Honolulu, Sand Island WWTP

1350 Sand Island Parkway

Honolulu, Hawaii 96819

Phone: 1-808-847-8356, Fax: 1-808-842-1301

E-mail: yoshi1@gte.net

Anita Fernandez, Vice-Chair

Phone: 1-808-879-6109, Fax: 1-808-879-6369

Kevin Nakamura, Membership Chair

Department of Environmental Services

City & County of Honolulu, Sand Island WWTP

1350 Sand Island Parkway

Honolulu, Hawaii 96819

Phone: 1-808-847-8374, Fax: 1-808-848-6532

E-mail: MDA0094@co.honolulu.hi.us

Jay Nakandakare, Vice-Chair

Phone: 1-808-847-8330, Fax: 1-808-848-6532

E-mail: MDS0095@co.honolulu.hi.us

Tina Nakasone, Newsletter Chair

Hawaii Pacific Engineers, Inc.

1132 Bishop Street, Suite 1003

1999-2000 HWEA BOARD OF DIRECTORS AND SPECIALTY COMMITTEE CHAIRS (continued)

Honolulu, Hawaii 96813-2830
 Phone: 1-808-524-3771, Fax: 1-808-538-0445
 E-mail: tmu@hawaiiipacificengineers.com

Greg Chung, Vice-Chair

Phone: 1-808-488-0477, Fax: 1-808-488-3776
 E-mail: engrsol@gte.net

Dwight Nakano, Pretreatment Chair

County of Maui, Wastewater Reclamation Division
 200 South High Street
 Wailuku, Hawaii 96793

Phone: 1-808-270-7988, Fax: 1-808-270-7425

Ken Kawahara, Vice-Chair

Phone: 1-808-527-5377, Fax: 1-808-527-6214

David Nagamine, Public Education Co-Chair

Department of Environmental Services
 City & County of Honolulu, 4th Floor
 650 South King Street
 Honolulu, Hawaii 96813

Phone: 1-808-527-5368, Fax: 1-808-527-6214

Vacant, Public Education Co-Chair

Roger Babcock, Jr., Research Interim Chair

University of Hawaii at Manoa
 Department of Civil Engineering
 2540 Dole Street
 Holmes Hall 383
 Honolulu, Hawaii 96822

Phone: 1-808-956-7298, Fax: 1-808-956-5014
 E-mail: babcock@wiliki.eng.hawaii.edu

Dan Peters, Safety Chair

Department of Environmental Services
 City & County of Honolulu, Sand Island WWTP
 1350 Sand Island Parkway
 Honolulu, Hawaii 96819

Phone: 1-808-847-8327, Fax: 1-808-848-6532

Ivan Nakatsuka, Student Activities Chair

Austin, Tsutsumi & Associates
 501 Sumner Street, Suite 521
 Honolulu, Hawaii 96817

Phone: 1-808-533-3646, Fax: 1-808-526-1267

Eassie Miller, Water Reuse Co-Chair

Brown and Caldwell
 119 Merchant Street, Suite 200
 Honolulu, Hawaii 96813-4413

Phone: 1-808-523-8499, Fax: 1-808-533-0226

E-mail: emiller@hawaii.rr.com

Victor Moreland, Water Reuse Co-Chair

Phone: 1-808-836-6919, Fax: 1-808-833-2068

1999 WINTER JOB BANK

For vacancy announcements for the **City and County of Honolulu**, please call the Department of Human Resources at (808) 523-4302.

For vacancy announcement for the **County of Hawaii**, please call the 24-hour Job Hotline at (808) 934-0185.

For vacancy announcements for the **County of Kauai**, please call the Department of Public Works at (808) 241-6610.

For vacancy announcements for the **County of Maui**, please call Carol Kurisu of the Department of Personnel Services at (808) 270-7850.

ATTENTION LUA LINE READERS

The *Lua Line* is a publication of the Hawaii Water Environment Association. It is published three times a year, with Spring (April - May), Summer (August - September), and Winter (December - January) issues. Its readership consists of over 400 individuals comprised of consulting and government engineers, wastewater treatment plant operators, laboratory technicians, university research staff, equipment vendors, students, and concerned citizens.

If you are interested in advertising in the *Lua Line*, please contact Tina Nakasone at 1-808-524-3771 or Greg Chung at 1-808-488-0477.



On-Line BOD/COD/TOC Load Analysis



Isco-STIP Process Load Analyzers give you accurate, continuous real-time load data for process control in wastewater treatment applications.

- ◆ Patented sample intake system eliminates expensive ultrafiltration
- ◆ Rapid analysis time allows precise control
- ◆ Graphic LCD panels with 90-day history

Contact us for complete information today!

Sharman Inc.
 P.O. Box 8121
 Walnut Creek, CA 94596-8121
 Phone: (800) 873-7573
 Fax: (925) 930-8472



**HAWAII WATER
 ENVIRONMENT ASSOCIATION**
 ● Since 1962

CHANGE SERVICE REQUESTED

**Bulk Rate
 U.S. Postage
 PAID
 Honolulu,
 Hawaii**



Printed on recycled paper