



LU A LINE



A Publication of the Hawaii Water Environment Association

Volume 13 Number 2

Internet Address: <http://www.hwea.org>

Summer 2000

PRESIDENT'S MESSAGE

By Lance Manabe, 2000-2001 HWEA President

Summer is almost over and we will be moving into fall soon.

This year is just flying by and we are quickly approaching the middle of the 2000-2001 HWEA fiscal year. We are coming up on a busy time for both HWEA and WEF. The annual WEFTEC Conference 2000 will be here soon on October 14 - 18, 2000 in Anaheim, California. We also look forward to the Bi-Annual HWEA Water Reuse Conference scheduled for November 2-3, 2000 in Keahou on the Big Island. For more information on the Reuse Conference check out our website at www.hwea.org.

Our specialty committees are hard at work, organizing and planning various events and projects for the association. We are always looking for suggestions and volunteers to assist in achieving the goals of the various Specialty Committees. I would like to extend my deepest appreciation to those who have given of their time and effort to serve in HWEA and urge you to keep up the great work. For those of you considering involvement in HWEA, I would encourage you to check out our various Specialty Committees. I'm pretty sure we have one for you.

We are looking to update our reference manual along with our constitution and bylaws. As times change, we will be updating our documentation for the association on a regular basis. You can check out the association's documentation at our website and send us e-mail if you have comments or suggestions to help us update our documents.



Lance Manabe

I would like to welcome the many new members that have joined the Hawaii Water Environment Association this year. Mahalo to Alma Takahashi and Yvonne Miyasato for doing a great job in keeping up with the membership committee. They are doing a really good job in keeping me informed of the new members and helping the effort to recruit new members and renew existing membership. We appreciate the efforts of HWEA members who get the word out and continue to encourage new membership. I believe the benefits that our association provides can be a real asset to those in the water/wastewater field.

The conference committee for the 2001 Annual Conference have begun their planning and this year promises to bring new educational as well as networking opportunities for the association. Greg Chung and Leanne Watanabe are hard at work with their new conference committee chairs organizing this coming years conference. If you are interested in being involved with the conference please contact Leanne or Greg.

“The objective of the HWEA Executive Committee is to meet the needs of all its members.”

The Collection System and Public Education Specialty Committees are heading up the effort to acquire a grant from the State Department of Health to develop a Sanitary Sewer Overflow Prevention Public Education Program. The purpose of the project is to educate the public on: 1) the causes of sewage spills, 2) impacts to public health and sewer

(Continued on page 2)

PRESIDENT'S MESSAGE (Cont.)

(Continued from page 1)

user's pocketbooks, and 3) the important role that the public has in minimizing the occurrence of sewage spills. This project will help reduce adverse water quality and public health impacts from sewage spills, and reduce sewer system operation/maintenance and upgrade costs. If you are interested in being involved please call Roy Abe at Hawaii Pacific Engineers, Inc.

The Water Reuse Committee is busy planning the Water Reuse Specialty Conference - "Completing the Cycle" to be held on the Big Island's Aston Keauhou Beach Resort, November 2-3, 2000. Robert Miyasaki from the Department of Design and Construction is heading the effort of planning this conference. If you are interested in helping out please call Robert at 527-5159.

I would again like to encourage those of you who have thought about getting involved please check out our web site at www.hwea.org for the many opportunities that your association provides. We are here to serve you and promote Hawaii's water environment.

Secretary-Treasurer's Report

as of July 2000

Bank of Hawaii Accounts

Member Associations	\$7,108.00
---------------------	------------

Merrill Lynch Accounts

Member Associations	\$11,680.52
---------------------	-------------

Conference	\$46,769.21
------------	-------------

Petty Cash	\$96.50
-------------------	----------------

TOTAL	\$65,654.23
--------------	--------------------

2000 SUMMER JOB BANK

For vacancy announcements for the **City and County of Honolulu**, please call the Department of Environmental Services at (808) 527-6667.

For vacancy announcement for the **County of Hawaii**, please call the 24-hour Job Hotline at (808) 961-8618.

For vacancy announcements for the **County of Kauai**, please call the Department of Public Works at (808) 241-6610.

For vacancy announcements for the **County of Maui**, please call Carol Kurisu of the Department of Public Works and Waste Management at (808) 243-7850.

MEMBER SERVICE E-MAIL

msc@wef.org

address changes,
membership inquiries,
subscription inquiries,
or anything related to
membership

pubs@wef.org

order publications,
check on order status,
price quotes

confinfo@wef.org

registration questions
& requests for
conference information

techniq@wef.org

technical questions

webfeedback@wef.org

your comments about
our website

NEWS FROM THE NATIONAL DIRECTOR
Victor Moreland, National Director
Ph. 1-808-836-6919, Fax 1-808-833-2068

One of the four W E F / M A Information Exchange Meetings was held at the Kauai Beach Resort May 19 and 20. Attendees came from Alaska, Arizona, British Columbia, California, Hawaii, Idaho, Louisiana, New York, Oregon, Tennessee, Texas, and WEF totaling 29 people. The Kauai Operations Association (KOA) put together a great welcoming reception at Lydgate Beach Park Thursday night before the work really started. There were several requests asking if KOA could cater events like this on the mainland from several of the member associations (MAs).



Vic Moreland

Friday started with WEF updates about WEF strategic initiatives: vision, mission, leading source of information and knowledge on the water environment, optimize leading edge information technology, develop marketing and image program, expand and build alliances and partnerships, enhance global presence, and provide technical leadership for global environmental policy formation.

The conversion then turned to governance which talked about how WEF began as the Federation of Sewage Works Associations (1928) and changed to the current name Water Environment Federation (1991). Currently WEF operates in five world regions: Asia Pacific, Europe, Latin America/Caribbean, Middle East/Africa, and North America. There are 76 Member Associations: 45 North America and 31 World-wide. WEF is a grass-roots organization that makes no major policy or program implementation until reviewed and approved by

the majority vote of the Board of Directors. Members opportunities for input come through: the information exchange meetings, MA annual meetings, volunteer leadership events, WEF committees, and the WEF staff.

Membership discussions followed the informative governance presentation concentrating on the Professional Wastewater Operations (PWO) members. There is a very strong desire to maintain this membership by WEF and of course the MAs and to make sure proper services are provided to benefit all. As many of you have noticed the Operations Forum and Water Environment and Technology have merged in one journal still providing the original journal for PWO and active members plus adding the other journal for added information and reading enjoyment. A new category was discussed about Facility membership, which would include: utilities, sewer districts, municipal plants, industrial wastewater treatment plants, and other facilities, systems or agencies. Fee structure and benefits are still being discussed by a Task force.

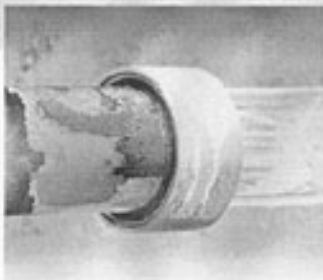
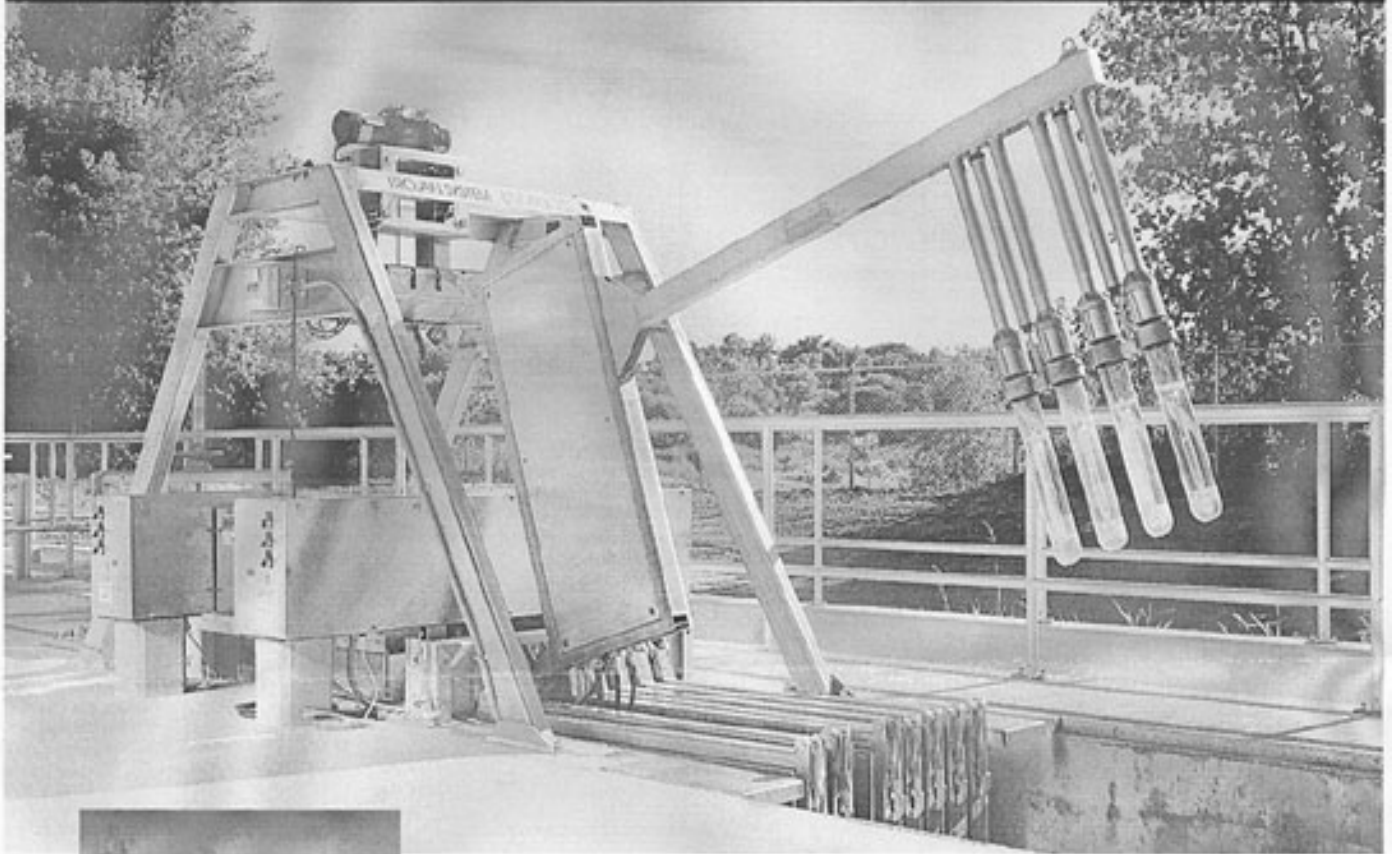
The Stockholm Junior Water Prize was discussed based on the current WEF involvement and future MA involvement. This is something that each MA can promote on a smaller scale, that could be integrated with WEF.

WEF budget was presented and discussed pointing out the challenges of predicting income and expenses. Several income shortfalls (advertising, membership, and publications) were made up by expenses savings (travel, postage, printing, and commissions). This was counteracted by prudent early deficit predictions with strong program management by WEF leadership and staff. There still remains concerns about membership trend (decreasing) and advertising income (decreasing).

We also talked about the history of WEF dues and how they impact the operations and actual need to have periodic increases. The big questions still exist: How much? and How frequent?

(Continued on page 10)

Self-Cleaning UV



Trojan...

the revolutionary System UV4000™ will change the way you think about wastewater disinfection

Trojan System UV4000™ incorporates high intensity UV lamps in a controlled geometry, variable UV lamp output precisely matched to wastewater UV demand, modular open channel lamp configurations and our innovative self-cleaning system. The use of high intensity UV lamps dramatically reduces the total number of lamps required, resulting in reduced space requirements.

System UV4000™ is engineered to meet the most demanding performance requirements, whether the application be primary or secondary effluents, combined sewer overflows, stormwater or high level disinfection.



Trojan Technologies Inc.

World Leader in UV Disinfection Systems

www.trojanuv.com

Head Office: 3020 Gore Road, London, Ontario, Canada N6V 4T7 Tel: (519) 457-3400 Fax: (519) 457-3030

California: 2050 Peabody Road, Suite 200, Vacaville, CA, U.S.A. 95687 Tel: (707) 469-2680 Fax: (707) 469-2688

Hawaii: Hawaii Engineering Services, 2234 Hoonee Place, Honolulu, HI 96819 Tel: (808) 262-7773 Fax: (808) 252-7768 E-mail: hespumps@aol.com

PWO NEWS

Kevin Nakamura, PWO Representative
Ph. 1-808-847-8374, Fax 1-808-848-6532

Greetings fellow Wastewater Professionals and welcome to the latest edition of Lua Line. The big news for this article is the coverage of the operations component of our successful Hawaii Water Environment Association Millennium Conference. The conference was a valuable source of information from the various technical sessions, many vendor displays and the networking with other wastewater professional.

As entertaining and exciting as anything else at the conference was the Operations Challenge. This years challenge was exciting for a couple of reasons. The first was that we had four teams competing representing the Big Island, Maui, Metro Oahu and Kauai (the defending champion). We were slated to have six teams, but unfortunately the Leeward and Windward Oahu teams both pulled out of the competition. The second reason was this years closely contested yet controversial Challenge itself.

The team standings going into the last event (each team was on a different event) was such that no team could afford to make any mistakes. But as it turned out, one team made more than its share. The team from Hilo took a strategic risk in the Pump event wherein they calculated the minutes they felt they were ahead and correspondingly omitted necessary steps from the event. While the rationale for this strategy was sound, the Hilo team lost sight of the intent and spirit of the Challenge (where we are all striving to do our best and complete the challenge to its fullest). The Hilo team was disqualified and the Kauai Team (KOA Nitrifiers) won the Challenge for the third consecutive year. The Maui team came in Second and Metro Oahu was...Third!!

The Kauai team will represent HWEA at the National Operations Challenge, to be held in



Kevin Nakamura

Anaheim, California in October. We have secured several vendors whom are willing to sponsor the team with lodging, team overalls, safety suits and possibly hard hats. If anyone knows any other vendors who are willing to help sponsor the Hawaii team

please have then contact me.

The 2001 HWEA Annual Conference will offer another chance to dethrone the KOA Nitrifiers. Potential Operations Challenge Teams should start planning now and formalizing their teams early to produce successful results. Team applications will be mailed out soon, or you can contact me for an application if you need one.

Also, nominations for Operator achievement for WWTP Operator Grades I / II, III / IV as well as Maintenance and Laboratory personnel will be by the middle of September, ***so look among your fellow workers for people deserving of recognition and start making a write-up.***

I would also like to mention that I will be contacting various people on each island to start a PWO (Professional Wastewater Operators) committee. As committee members we shall be responsible and/or influential for guiding our fellow operations, maintenance and laboratory personnel to the forefront of the wastewater industry and helping to meet the wastewater challenges of the future. PWO committee members will become involved in understanding where our industry is headed and to determine how best to prepare our fellow PWO members to meet these challenging times. If anyone is interested in joining the PWO committee, please contact me. I am looking for at least one person from each island (preferably two) to help identify and address the different issues each island has.

(Continued on page 8)

MEMBERSHIP COMMITTEE

Alma Takahashi, Committee Chair
Ph. 1-808-270-7420, Fax 1-808-270-7425
Yvonne Miyasato, Vice-Chair
Ph. 1-808-270-7419 Fax 1-808-270-7425

The Membership Committee would like to welcome the following new HWEA members:

- | | |
|---------------------|--------------------|
| Bradley Pierce | Harold Kaimiola |
| James Preddy | Clayton T. Yamada |
| William E. Atiz | Herman R. Ellis |
| Joy K. Ho | Walter Medina |
| James Figueroa | Jill T. Takashiba |
| John J. Witeck | Raymond N. Matasci |
| Sotiris Stassinou | Stuart R. Soong |
| Vanessa R. Kawamura | Larry J. Mallari |
| Ross K. Kuraya | Travis B. Webster |
| Debra E. Ikeno | Scott A. Kunioka |
| Alvin H. Kawada | Jeffrey Rubugio |
| Dwayne D. Fong | Tony Shan |
| Leanne Watanabe | Gary S. Kong |
| | Jason H. Lau |



Alma Takahashi

MEMBERSHIP RECRUITMENT CONTEST

August 1 to July 31

WEF's annual 1999-2000 membership recruitment contest ended July 31, 2000. Mahalo to the following members for

their recruitment efforts:

	Number of Members Recruited 1999-2000	Cumulative Number of Members Recruited
Kevin Nakamura	11	22
Roger Babcock	3	3
Dwight Nakao	3	3
Walter Billingsley	2	2
Jon Kawamura	1	1
Lance Manabe	1	1
Douglas Lee	1	2
Frank Belfry	1	1

Prizes for the WEF recruitment contest are:

Level	1999-2000 Prize	2000-2001 Prize
2 - 9 members	Traveler's Office Kit	Business Card Holder
10 - 19 members	CD Organizer	Cell-Phone Calculator Alarm Clock
20 - 49 members	Portfolio with Calculator	Cell-Phone AM/FM Radio
50+ members	Electronic Organizer	Cell-Phone Holder with Organizer

HWEA MEMBERSHIP STATUS AS OF JULY 2000

CATEGORY	MEMBERS
Active	233
Corporate - Private	9
Life	5
Operations Division	143
Retired	3
Student	4
TOTAL	397

MEMBERSHIP COMMITTEE (Cont.)

(Continued from page 6)

Plus, each time you recruit a new member, your name will be entered in the Grand Prize Raffle to be held in August, 2001:

Grand Prize	\$1,000 American Express Gift Certificate
Second Prize	\$500 American Express Gift Certificate
Third Prize	\$250 American Express Gift Certificate

The WEF member who sponsors the most new members between August 1, 2000 and July 31, 2001 will be honored with the title “Recruiter of the Year” and will receive a plaque at the WEFTEC 2001 Awards Ceremony in Atlanta, Georgia. WEF also recognizes members who have recruited 50 or more new members since 1986.

To become a recruiter, tell prospective members about the value of WEF/HWEA membership (member discounts, networking opportunities, technical information, professional development, committee involvement, etc.) and give them a WEF membership application. Be sure to print your name and WEF ID # on the *WEF Sponsor Name* and *Sponsor ID* line before giving the application to a colleague. You will receive sponsorship credit when your prospect joins. Applications can be obtained from the Membership Committee or on the internet at www.hwea.org. All applications and inquiries can be sent to:

HWEA Membership
 PO Box 2422
 Honolulu, HI 96804
 -or-

Alma Takahashi
 Maui County Wastewater Reclamation Division
 200 South High Street
 Wailuku, HI 96793

FIELD TRIP ANNOUNCEMENT

**TOUR OF THE EWA WATER RECYCLING FACILITY
 (at the Honouliuli WWTP)**

Where: Honouliuli Wastewater Treatment Plant
 (meet in front of the facility administration office)

When: Thursday, October 26, 2000

Time: 4:00 – 6:00 P.M.
 Refreshments will be served

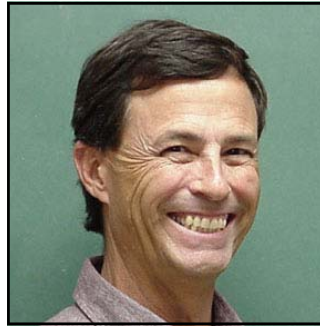
RSVP: Horst Brandes, ASCE, by October 20, 2000
 Phone 956-8969
 or online at <http://www.ascehawaii.org/fieldtrip.html>

**Event Co-Sponsored by Hawaii Society of Professional Engineers (HSPE)
 and American Society of Civil Engineers (ASCE) – Hawaii Section**

PUBLIC EDUCATION COMMITTEE

Tim Steinberger, Committee Chair
Ph. 1-808-527-5388, Fax 1-808-523-4642

What's new with the HWEA Public Education Committee? For this first half of the year, the committee continues to forge forward with its efforts to "get the word out" on the use and benefits of reclaimed water. The video that was produced has become a very popular item, there have even been requests from the mainland for copies of this presentation.



Tim Steinberger

The committee continues to look for new opportunities to do presentations. Target groups include the schools, community groups, and business groups. We will be adding Science Fairs to our list as well.

The Public Education Committee's new program for 2000 and 2001 is to work with the Collection System Committee to initiate a public education program for the purpose of informing the populace of the State on impacts to the sewer systems from private contributions. These contributions include rainwater, grease, and any toxic substances that a homeowner may wish to dispose of via the sewer system. This public education program will be in the form of public service announcements to be aired on television.

We have applied for a Department of Health grant (thanks to Roy Abe for his hard word on preparing this grant application) and will be seeking matching funds from the counties. We will also be seeking member support to help make this program as much of a success as the reclaimed water public education program.

As always, if there are any HWEA members interested in participating on this committee, we are always open to new members and encourage any ideas. Please contact Tim Steinberger at 527-5388 or e-mail me at tsteinberger@co.honolulu.hi.us.

SERVICES AND PRODUCTS TO ENHANCE THE MANAGEMENT OF WASTEWATER COLLECTION AND WATER DISTRIBUTION SYSTEMS

The world leader in conducting collection and distribution system programs to build physical asset inventories, assess infrastructure condition, locate specific defects and leaks, and execute the repairs needed to achieve optimum system performance.

Specific Services Include:

- Long-term and temporary flow monitoring
- Sewer system evaluation surveys
- Repair and rehabilitation
- Leakage and accountability programs
- Water meter testing and calibration
- Comprehensive infrastructure management software

For more information contact:

Jeff Berk
 7350 Opportunity Road
 San Diego, CA 92111
 Phone: (619) 571-0945
 E-mail: jeff.berk@adserv.com

ADS
 ENVIRONMENTAL SERVICES



PWO NEWS (Cont.)

(Continued from page 5)

This will help in terms of getting the differences in ideas on how to assist each island, since each islands PWO organization is currently at different levels of development.

The meetings will be informal and more than likely will be via phone-con. At a later date; hopefully monies can be budgeted to allow for regular meetings of the entire committee together.

This is a good opportunity to become involved in our HWEA and to help the cause.

Thank you for your support and if you have any questions or concerns, please let me know.

22nd ANNUAL HWEA CONFERENCE RECAP

By Kevin Nakamura and Audrey Uyema Pak, 2000 Conference Co-Chairs

We thank you for your participation at the 22nd Annual Hawaii Water Environment Association Conference which was held Monday through Wednesday, June 5-7, 2000 at the Neal S. Blaisdell Center in Honolulu, Hawaii.

This year's conference theme was *Facing the Water Environment Challenges of the New Millennium* and emphasized the importance of exchanging ideas and working together to improve our water environment.



Audrey Uyema Pak

The conference presented a total of 36 technical sessions covering a wide variety of timely and interesting topics. For the first time in Hawaii Water Environment Association conference history, abstracts of the technical sessions were put onto a CD-ROM which was distributed to all conference attendees.

A total of 50 exhibitors showcased their products and services, occupying a total of 68 booths. Also, graduate students from the University of Hawaii at Manoa displayed posters of their research projects involving the water environment and pollution control fields in Hawaii. Conference attendees were also treated to a spirited competition between professional wastewater operators from the islands of Kauai, Oahu, Maui, and Hawaii. The operators displayed their skills in the center of the exhibits area as they competed for the right to represent Hawaii in the national competition that will be held this October in Anaheim, California. Congratulations to the Kauai Nitrifiers, who will represent the Hawaii Water Environment Association at the 2000 Water

Environment Federation Conference (WEFTEC).

Social events included the always popular President's Reception at the Waikiki Yacht Club and the annual awards banquet at the Pacific Beach Hotel, where we were entertained with the popular Hawaiian music group, IMUA. Congratulations to Herman Ellis of the City and County of Honolulu's Department of Environmental Services for winning the Las Vegas trip giveaway.

We would like to extend our warmest mahalos (thank you) to the president of the national Water Environment Federation, Mr. Albert Goodman, and his wife, Jan. We hope their visit to Hawaii was a memorable one. We would like to thank the mayor of the City and County of Honolulu, Jeremy Harris, who presented the conference address. We would also like to thank all of the session speakers, exhibitors, and donors who contributed to the success of this year's conference.



Kevin Nakamura

At this time, we would like to take this opportunity to introduce all of you to next year's (23rd Annual 2001 conference committee Co-Chairs, Mr. Greg Chung of Engineering Solutions, Inc. and Ms. Leanne Watanabe of the Hawaii State Department of Health, Clean Water Branch.

Finally, we would like to thank all of the hard-working conference committee members who gave so much in contributing to the success of this year's conference.

(Continued on page 10)

22nd ANNUAL CONFERENCE RECAP (Cont.)

(Continued from page 9)

22nd (2000) Annual Conference Committee:

Conference Chairpersons

Audrey Uyema Pak, Co-Chair
Kevin Nakamura, Co-Chair

Registration Committee

Mike Nishimura, Co-Chair
Anna Lee, Co-Chair

Program Committee

Tom Myers, Co-Chair
Travis Hylton, Co-Chair

Exhibits Committee

Wade Thode, Co-Chair
David Yamada, Co-Chair
Kevin Kashimoto, Co-Chair

Contributions Committee

Kenneth Sprague, Co-Chair
Leighton Lum, Co-Chair

Social Events Committee

Cindy Masuoka, Co-Chair
Craig Chung, Co-Chair

Operations Challenge Committee

Kevin Nakamura, Chair

Publications Committee

Leland Lee, Chair

22nd Annual Conference Committee Members

(left to right): Mike Nishimura (Registration), Wade Thode (Exhibits), Anna Lee (Registration), Travis Hylton (Program), Audrey Uyema Pak (Co-Chair), Kevin Kashimoto (Exhibits), Kevin Nakamura (Operations Challenge), Tom Myers (Program), David Yamada (Exhibits)

Missing: Kenneth Sprague, Leighton Lum, Cindy Masuoka, Craig Chung, Leland Lee

NEWS FROM THE NATIONAL DIRECTOR (Cont.)

(Continued from page 3)

Each attending MA made a presentation about some aspect of their organization to inform and open dialog with the other attendees. This was very good and prompted some interesting discussions. Enough about this meeting.

Congratulations to the entire cast of hundreds that put the Annual Conference together it was great. Everything was enjoyable and very informative. Thank you for a job *WELL DONE*.

Don't forget the WEFTEC October 14-18, it will be good for sure. And please do not forget to attend our own Water Reuse Conference November 2 and 3. For further information about this events checkout the WEF and HWEA websites. *SEE YOU THERE*.



CIVIL ENGINEERING AND PLANNING
WASTEWATER AND WATER TREATMENT
CONSTRUCTION MANAGEMENT SERVICES

Hawaii Pacific Engineers, Inc.

1132 Bishop Street, Suite 1003
Honolulu, Hawaii 96813-2830
Phone: (808) 524-3771
Fax: (808) 538-0445



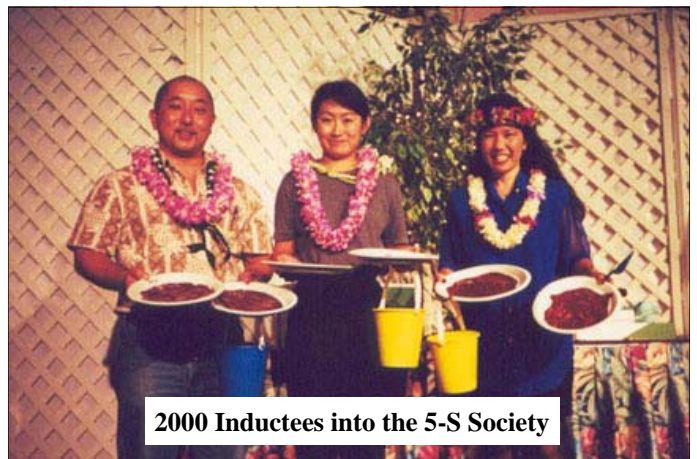
22nd ANNUAL HWEA CONFERENCE



2000-2001 HWEA Board of Directors with WEF President Albert Goodman



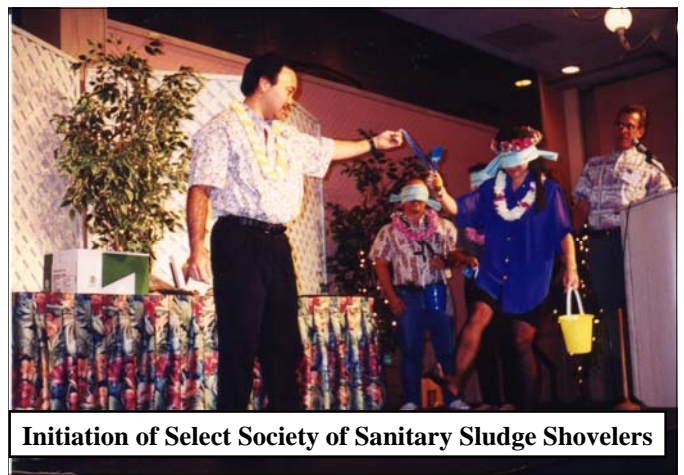
Operator's Challenge



2000 Inductees into the 5-S Society



Banquet Performance by musical group IMUA



Initiation of Select Society of Sanitary Sludge Shovelers

CONFERENCE COMMITTEE

Leanne Watanabe, Conference Co-Chair

Ph. 1-808-586-4142, Fax 1-808-586-4352

Greg Chung, Conference Co-Chair

Ph. 1-808-488-0477, Fax 1-808-488-3776

Congratulations to the 2000 HWEA Conference Committee for a job well done! Past Co-chairs, Kevin Nakamura and Audrey Uyema Pak, along with their hard working committee members managed to put together another successful conference. The “conference baton” has been passed on and plans for next year’s conference are well underway. We have a great team of people on board for the 2001 Conference Committee and they are already working very hard to bring you another outstanding conference with informative technical sessions and exhibits that feature the latest technologies and services!



Leanne Watanabe



Greg Chung

The 2001 HWEA Conference will be held at the Neal Blaisdell Center on March 20 and 21, 2001, with the Pre-Conference to be held on March 19, 2001. The theme of next year’s conference will be, “Malama i ka mua o na wai o Hawai’i,” or “Caring for the Future of Hawai’i’s Waters.” Conference registration packets will be mailed out shortly so remember to register early and avoid paying late fees! In keeping with tradition, the President’s Reception will be hosted at the Waikiki Yacht Club where ono pupus and fellowship can be enjoyed along the scenic waterfront. To

conclude the conference, the evening banquet will feature great door prizes and some of the best in local entertainment!

We welcome any comments or suggestions you may have to improve and enhance the upcoming conference, and also welcome any volunteers who wish to help out in any way. Getting involved in HWEA is not only a rewarding experience in itself, but it is also a great way to meet other professionals in the environmental field. If you are interested in helping with the 2001 conference, please contact any of the conference co-chairs or one of the specific conference committee chairs as follows:

CONFERENCE COMMITTEE CO-CHAIRS:

Greg Chung
Engineering Solutions, Inc.
Pearlridge Uptown Center, Suite 213
Aiea, Hawaii 96701
Phone: 488-0477 Fax: 488-3776
email: engrsol@gte.net

Leanne Watanabe
Hawaii State Department of Health, Clean Water Branch
919 Ala Moana Boulevard, Room 301
Honolulu, Hawaii 96814
Phone: 586-4142 Fax: 586-4352
email: lwatanabe@eha.health.state.hi.us

TECHNICAL PROGRAM COMMITTEE CO-CHAIRS:

Jay Hamai
City & County of Honolulu
Department of Design and Construction
650 South King Street
Honolulu, Hawaii 96813
Phone: 527-5003 Fax: 523-4642
email: jhamai@co.honolulu.hi.us

Dr. Sheryl Nojima
SEY Engineers, Inc.
1126 12th Avenue, Room 309
Honolulu, Hawaii 96816
Phone: 737-1875 Fax: 734-5516
email: seyeng@aloha.net

SOCIAL EVENTS COMMITTEE CO-CHAIRS:

Lynn Katahara
Fukunaga & Associates
1388 Kapiolani Boulevard, 2nd Floor
Honolulu, Hawaii 96814
Phone: 944-1821 Fax: 946-9339
email: fainc@aloha.com

(Continued on page 13)

CONFERENCE COMMITTEE (Cont.)

(Continued from page 12)

SOCIAL EVENTS COMMITTEE CO-CHAIRS (Cont.):

Paul Arita
 Austin Tsutsumi & Associates
 501 Sumner Street, Suite 521
 Honolulu, Hawaii 96817
 Phone: 533-3646 Fax: 526-1267
 email: ata@lava.net

EXHIBITS COMMITTEE CO-CHAIRS:

Jason Lau
 The Limtiaco Consulting Group
 615 Piikoi Street, Suite 1605
 Honolulu, Hawaii 96814
 Phone: 596-7790 Fax: 596-7361
 email: jason@tlcghawaii.com

John Katahira
 The Limtiaco Consulting Group
 615 Piikoi Street, Suite 1605
 Honolulu, Hawaii 96814
 Phone: 596-7790 Fax: 596-7361
 email: john@tlcghawaii.com

OPERATIONS CHALLENGE COMMITTEE CHAIR:

Kevin Nakamura
 City and County of Honolulu, Sand Island WWTP

1350 Sand Island Parkway
 Honolulu, Hawaii 96819
 Phone: 847-8374 Fax: 848-6532
 email: MDA0094@co.honolulu.hi.us

REGISTRATION COMMITTEE CHAIR:

Ayako Kawabata
 Hawaii Pacific Engineers, Inc.
 1132 Bishop Street, Suite 1003
 Honolulu, Hawaii 96813
 Phone: 522-7427 Fax: 538-0445
 email: akawabata@hawaiipacificengineers.com

CONTRIBUTIONS COMMITTEE CHAIR:

Ken Ishizaki
 Engineering Concepts, Inc.
 1150 South King Street, Suite 700
 Honolulu, Hawaii 96814
 Phone: 591-8820 Fax: 591-9010
 email: eci@gte.net

PUBLICATIONS COMMITTEE CHAIR:

Debra Ikeno
 Engineering Concepts, Inc.
 1150 South King Street, Suite 700
 Honolulu, Hawaii 96814
 Phone: 591-8820 Fax: 591-9010
 email: eci@gte.net

R. M. TOWILL CORPORATION
 Planning • Engineering • Environmental Services • Photogrammetry • Surveying • Construction Management

Serving Hawaii's Wastewater and Water Needs Since 1930

Waialakamilo Business Center
 420 Waialakamilo Road Suite 411
 Honolulu Hawaii 96817-4941

Visit us on the web at www.rmtowill.com

Sand Island WWTP expansion
 Island of Oahu - 2005

Kaula WWTP
 Island of Kauai - 1993

Kuakini Highway Interceptor Sewer
 Island of Hawaii - 1969

Third Bi-Annual Water Reuse Specialty Conference

“Water Reuse – Completing the Cycle”

When: November 2 – 3, 2000

Where: Aston Keauhou Beach Hotel, Kailua-Kona on the island of Hawaii

Who Should Attend?

- ◆ Design engineers, planners, researchers, operators, and laboratory technicians
- ◆ Landowners, developers, and property managers
- ◆ Water and wastewater system managers
- ◆ Large water consumers and current and future reclaimed water users
- ◆ Golf course superintendents and landscape maintenance superintendents
- ◆ Regulatory agency officials, and legislative and administrative decision makers

This is your opportunity to:

- ◆ Examine the importance of water recycling in meeting our current and future water needs
- ◆ Develop a thorough understanding of the requirements needed to manage your reclaimed water program
- ◆ Learn from “real world” experiences of the other professionals
- ◆ Increase your understanding of the financial, legal, and technical aspect of water reuse

Cost: \$100.00 (ASCE, AWWA, HWEA, or WEF Member)
\$125.00 (Non-Member)

Registration and payment due by October 19, 2000

Please make checks payable to: HWEA

Mail completed registration form and fee to: Water Reuse Conference
C/O Hawaii Pacific Engineers
1132 Bishop Street, Suite 1003
Honolulu, Hawaii 96813

Registration and Hotel Reservation Forms are available on-line at:

<http://www.hwea.org/events/reuseann.htm>

Should you have any questions, please contact: Eassie Miller at (808) 523-8499, Vic Moreland at (808) 839-7848, or Robert Miyasaki at (808) 527-5159

**WATER ENVIRONMENT FEDERATION LAUNCHES
NEW “MYWEF” WEB SITE AT WWW.WEF.ORG**

Innovative Customization Features Enable Users to Create Site to Meet Individual Needs

For Immediate Release: September 13, 2000 (Alexandria, Va.) –A dynamic link to cutting-edge water quality information was unveiled today, as the Water Environment Federation (WEF) launched *MyWEF* – its new, easy-to-access Web site. Online at www.wef.org, *MyWEF* introduces a host of customization and personalization features that enable users to create an online water quality resource that complements their interests.

By taking advantage of the free registration at *MyWEF*, each user can provide a profile and choose the content he/she wants to see on a daily basis. The site’s specialized personalization features immediately streamline data per user specifications and can be edited at any time to keep up with a user’s growing, changing needs. For example, if a user indicates during the personalization process that biosolids is a particular interest, headlines and resources on biosolids will be featured prominently on his/her version of the Web site.

“I believe that the Federation’s new Web site will provide water and wastewater professionals who are interested in staying on top of the field with a total solution approach,” said WEF Director of New Media Sue Whitney. “Users can learn about the latest issues and technology, purchase products at the Online Bookstore, and network with peers – all on one site.” This “one-stop shopping” benefit means that users have fast, easy access to all of the site’s e-commerce, e-publishing, e-training, and e-networking services.

In addition to providing the latest water quality news, the new site continues WEF’s popular Technical Discussion Groups and adds chat rooms. Chat rooms can be public for anyone to participate, or private for registered users to choose whom they want to chat with and when. Colleagues can share expertise on a variety of technical issues and conduct business in live time.

Other benefits of the site include an online searchable archive of WEF publications, featuring full-text articles from 1999 WEF periodicals and papers from 2000 specialty conferences; general news headlines – including business, entertainment, and sports - available to compliment technical information; and full Internet search capability powered by the highly-rated Google™ search engine.

Contact: Nancy Blatt
Barry Eisenberg
1-703-684-2400

MyWEF
at www.wef.org

**YOUR FUTURE
YOUR NEEDS
YOUR SOLUTION**

Create your own
made-to-order version
of WEF's web site.
It's as easy as 1-2-3!

1
You Register
Register for MyWEF at www.wef.org and tell us what content you want to see.

2
We Search
Metacrawlers search www.wef.org and other major sites to give you access to vital information based on your profile.

3
You Benefit

- Access** a global network of water quality news anywhere, anytime
- Save** time
- Discuss** important ideas or problems with experts around the world
- Keep** your calendar up-to-date
- Stay** current on regulations and legislation
- Receive** special online offers for WEF products
- Review** important world headlines on general topics of interest

COLLECTION SYSTEM COMMITTEE

Jon Nishimura, Committee Chair
Ph. 1-808-944-1821, Fax 1-808-946-9339
Tina Ono, Committee Vice-Chair
Ph. 1-808-523-4067, Fax 1-808-523-4642

The HWEA Collection System Committee includes members with a broad range of experience and interests related to wastewater collection systems. Among the areas of interest that the committee is involved in are collection system operations and maintenance, collection system planning and design, national and local regulatory policies and requirements, and new technologies for system construction and rehabilitation. In its effort to share information with HWEA's general membership, the committee will regularly publish articles in the Lua Line covering current topics of interest concerning collection systems.

The topic for this issue is the Status of the City & County of Honolulu's Long Range Sewer Rehabilitation Plan, written by committee member Tim Steinberger, Branch Head, Planning Branch, Wastewater Design and Engineering Division, Department of Design and Construction, C&C of Honolulu.

Honolulu's Long Range Sewer Rehabilitation Plan

What's happening with the City and County of Honolulu's (CCH) Sewer Rehabilitation Plan? In 1995, the Consent Decree that was negotiated between the United States Environmental Protection Agency (EPA) and the State of Hawaii Department of Health (DOH), was entered into the Federal Court as a legally binding document. The City was given five years to investigate its collection system and develop a long term plan (implementation period of 20 years) to address and eliminate deficiencies within the collection system.

This plan was submitted to the EPA and DOH in



Jon Nishimura



Tina Ono

December of 1999. A key element of this plan was the identification and subsequent negotiation with the EPA on an acceptable design containment capacity for the City's collection system. The final plan proposed that CCH establish design standards that would contain flows occurring within the system that resulted from a 2-year 6-hour design storm. The rehabilitation program was a balance of meeting the goals of the Consent Decree to substantially reduce the occurrence of sanitary sewer overflows (SSO's) and the County's ability to pay for the mandated 20 years of proposed system improvements.

The Department of Design and Construction (DDC), Wastewater Design and Engineering Division (WWDED) is currently in the process of updating its design standards to reflect the new peak flow capacity requirements. The DDC is also approaching the completion of its collection system flow model (SFAS), which will standardize the methodology for determining future flows. (More about the SFAS Flow Model in future *Lua Line* Issues.)

The Final Plan submitted to EPA also identified five Capacity Management, Operations and Maintenance (CMOM) programs that CCH would develop. These programs are: Private I/I Reduction, Wet Weather SSO Mitigation, Wet Weather I/I Assessment, Critical Sewer Condition Assessment, and the Small Diameter Sewer Rehabilitation Program. The Final Plan was

(Continued on page 17)

STUDENT ACTIVITIES COMMITTEE

Ivan Nakatsuka, Committee Chair
 Ph. 1-808-533-3646, Fax 1-808-526-1267

SEARCH FOR NEW RECIPIENTS

The rising cost of tuition at the University of Hawaii, and other universities throughout our country, will make it even harder for students to afford a good college education. Over the past few years, HWEA has financially assisted several well-deserving students by awarding them scholarships of up to \$2000.



Ivan Nakatsuka

Students are eligible if they or their parents, are HWEA members as of September 30, 2000.

We again reach out with this invitation to our members to apply for the HWEA 2001 scholarships for themselves, or their dependents. The official announcement, with more information, is included in this issue of the *Lua Line*.

COLLECTION SYSTEM COMMITTEE (Cont.)

(Continued from page 16)

accepted and approved by the EPA earlier this year.

On the National front, in March of 2000, the EPA sent the "Final" draft of the "Sanitary Sewer Overflow (SSO) Policy" to the Office of Management and Budget (OMB) for comments and/or approval. The SSO Policy package is still with the OMB. According to a member of the Federal Advisory Committee (FAC), there are concerns with this agency as to the ability of many municipalities to finance the Capacity Management, Operation and Maintenance (CMOM) Programs (the CMOM is a requirement within the SSO Policy) and the resulting impacts to the economy. Following the OMB review and approval, the proposed SSO Policy will be published in the Federal Register, which initiates the public comment period. Comments to the proposed plan can be made through the EPA's website at www.epa.gov.

Questions? Comments? Want to know more? Feel free to contact anyone on the Collection System Committee.

Committee Activities

The committee is currently involved in a joint effort with HWEA's Public Education Committee and the City & County of Honolulu to initiate a public education program targeting improper use of the collection system by private users. By informing the public of how the sewer system works, why the system typically fails, and how these failures affect public health as well as the users pocketbooks, HWEA and the City hope to encourage proper use of the wastewater system. The committee is in the process of soliciting funding and a State Department of Health Grant for the production of a public education video for broadcasting on commercial television and will be needing member support in this project.

Any members out there that are interested in participating in this committee are encouraged to contact Jon at 944-1821 or Tina at 523-4067.

FUKUNAGA & ASSOCIATES, INC. 1388 KAPIOLANI BLVD.
 2nd FLOOR
 HONOLULU, HAWAII 96814
 PH. (808) 944-1821
 FAX (808) 946-9339

Consulting Engineers

2001 HWEA SCHOLARSHIP PROGRAM

PURPOSE

To provide financial assistance to HWEA members and their dependents seeking higher education, and to encourage academic excellence.

ELIGIBILITY

1. Any dues-paying member of HWEA (including PWOD) or member's dependent (claimed as a dependent on the member's most recent income tax return) since September 30, 2000.
2. Must be at least a freshman in the Fall 2001 semester at a college or university, enrolled full-time in a bachelors, masters, or doctorate degree program.
3. Curriculum of study (or major) to include engineering, public health, or natural sciences (e.g. biology, chemistry, geology, microbiology, oceanography, physics, etc.), as related to the protection and enhancement of the water environment and associated public health.
4. Previous HWEA scholarship awardees are not eligible.

AWARD

Up to two \$2,000 awards may be made each year. Awardee(s) will be invited to the HWEA Conference awards luncheon at no charge.

ENTRY REQUIREMENTS

In order to be considered, applicants must submit the proper application form (both pages), provide a transcript of grades for the most recent academic year and submit a letter of application, including the following application form and the items listed in Item 7. of the application form..

SELECTION

The number of awards to be made and the selection of the awardee(s) will be determined by the HWEA Executive Committee. Consideration will be given to applicants who are dedicated to their fields and have set goals for themselves which are consistent with the advancement of the objectives of WEF and HWEA.

TIME SCHEDULE

- Applications must be submitted (or postmarked) no later than December 31, 2000.
- Awards will be announced at the HWEA Conference on March 21, 2001. (date subject to change)
- Awards will be available for Fall 2001 (for Spring 2001, if already enrolled at a college/university) and will be presented to the recipient upon proof of registration.

FOR MORE INFORMATION, PLEASE CONTACT:
IVAN NAKATSUKA (Phone: 533-3646, Fax: 526-1267)
APPLICATION FORMS MAY BE REPRODUCED.

SCHOLARSHIP APPLICATION FORM

1. Name of Applicant _____ SSN _____

Permanent Home Address & Zip Code _____

Current Mailing Address & Zip Code _____

Business Phone _____ Residence Phone _____

2. Name of Member (if applicant is a dependent) _____

3. Intended Use of Scholarship in Fall of 2001 or Spring of 2001, if already enrolled at a college/ university (check appropriate box):

Name and location of college/university

Curriculum/Major _____

Full-time: Yes No

Degree Program Bachelors Masters Doctorate

(If for Bachelors, indicate following:)
 Freshman
 Sophomore
 Junior
 Senior

Expected date of degree completion _____

Date of entry into degree program _____

4. Other Colleges/Universities Attended

5. List three references (other than relatives).

6. Attach a transcript of grades for your most recent academic year.

7. Please submit a letter of application addressed to the HWEA Executive Committee covering the following:
 - a Reason for desiring a scholarship. Indicate to what expense(s) award will be applied.
 - b Description of how your curriculum of study is related to the protection and enhancement of the water environment and associated public health.
 - c Academic interest/vocational plans, including any plans for graduate work.
 - d Interests and activities: hobbies, memberships, offices held, etc.
 - e Employment - major work since high school graduation, type of work, name of employer, address, full-time or part-time, value of experience.
 - f Any other information that may assist the Executive Committee in making a decision.

8. Submit the application package (postmarked) by *December 31, 2000* to:

**HWEA
P.O. Box 2422
Honolulu, Hawaii 96804**

**Attention: Scholarship Committee
Ivan Nakatsuka**

LABORATORY COMMITTEE

Barney Asato, Committee Chair
Ph. 1-808-847-8356, Fax 1-808-842-1301
Anita Fernandez, Committee Vice-Chair
Ph. 1-808-879-6109, Fax 1-808-879-6369

**COMMITTEE RECALLS PAST
 ACHIEVEMENTS AND SETS FUTURE
 GOALS**

It was five years ago that my life was changed forever. The year was 1995. It was the week before Christmas. I was on the island of Kauai doing routine contract work teaching basic lab skills to the locals. My teenage son was tagging along and we had planned to do a bit of sightseeing after I was done. Then the call came. “Boss” Ian Kagimoto, HWEA president-elect, and his “enforcer” Guy Moriguchi invited my son and I to take a ride. Winding through the tropically lush Lawai countryside, we ended up at his ranch house perched high atop a hill with a killer view. He showed off his herd of goats. He said they were better than lawn mowers. Then he made me an offer I couldn’t refuse. I was to form a laboratory practices committee when he became president. He said it was time for the organization to work for all environmental professionals and not just engineers and wastewater operators. I jumped at the opportunity. That night, we sealed the bargain over dinner at the local pizzeria. And my life has not been the same.

The Laboratory Committee was officially organized in February 1996 at the annual HWEA conference. Present at this first meeting were HWEA president-elect Ian Kagimoto, WEF president Michael Pollen and his wife Peggy, Dr. Roger Fujioka, Kurt Chandler, Anita Fernandez, Myron Honda, Kevin Nishimura, Brenda Nuding, Robert Rychlinski, Lyle Shizumura, Lourdes Vasquez, Bruce Zhang, and myself. The committee was formed to improve the quality of data reported by environmental laboratories in the State of Hawaii, provide a forum for lab personnel to discuss technical problems and other issues of common interest, and promote



Barney Asato

improved working relationships between laboratory personnel and other professionals.

Through the years, the committee has completed a variety of publications including a handbook titled “Standard Laboratory Analytical Procedures

(SLAP)”, a training manual titled “Guidelines for Training Environmental Laboratory Personnel,” and several quality assurance handbooks.

Workshops and presentations were also developed including “Environmental Laboratories: What are they? What goes on there? How do they help us?,” “MF Procedure for *Clostridium perfringens*,” “Refinements of the Echinoderm Bioassay Protocol,” “Get Ready for the National Environmental Laboratory Accreditation Conference,” and “Lab Skills Training for Supervisors and Managers.”

In addition to these activities, the committee conducted a statewide survey on lab operations and data quality with 161 responses representing a full spectrum of the environmental community. Committee members also coordinate and judge the annual Lab Skills event of the Operator’s Challenge at HWEA conferences.

The committee currently administers the very successful split sample performance evaluation program for microbiological analyses. Started in July 1998 with five participating labs, the program has grown to include ten private- and public-sector labs for split sample analyses of fecal coliform, enterococci, and *Clostridium perfringens*.

A major unrealized goal is the adoption of a statewide lab accreditation program via the National Environmental Laboratory Accreditation Conference. This program would address the ongoing concern about the quality of data reported by

(Continued on page 22)

PRETREATMENT COMMITTEE

Dwight Nakao, Committee Chair

Ph. 1-808-270-7988, Fax 1-808-270-7425

Ken Kawahara, Committee Vice-Chair

Ph. 1-808-527-5377, Fax 1-808-527-6214

COMMITTEE ANNOUNCES SECOND ANNUAL CONFERENCE

Hello Everyone!
The Pretreatment Committee is excited to announce the possible Second Annual Pretreatment Training Conference coming in Spring 2001. We are working hard to assist the Water Environment Federation (WEF) and the United States Environmental Protection Agency (USEPA) with the organizational logistics. WEF and USEPA have tentatively scheduled Maui as the site for this upcoming event.



Dwight Nakao

The conference is scheduled for four days and offers two pretreatment training courses. The first three-day course will be a combination of basic and advanced topics in pretreatment. The second course will be on oil and grease control. All attendees will receive a certificate and be able to earn CEU credits.

If you missed the first pretreatment training courses held on Oahu, now's your chance to plan on attending next year's pretreatment training conference. The committee is planning on making this another successful conference, which will include exhibitors, ample time for networking, and great door prizes. Start planning and keep your ears open for any information about this upcoming conference in Spring 2001.

The committee would also like to ask if anyone is

interested in getting involved with the conference or the pretreatment committee in general. Please don't hesitate and call, E-mail, fax, etc. Become part of this exciting, rewarding and proactive pretreatment committee. We'll see you at our next committee meeting. Aloha!

ADVERTISEMENT

LABORATORY COMMITTEE (Cont.)

(Continued from page 21)

environmental laboratories in Hawaii. Unlike many areas across the U.S. with active accreditation programs, environmental labs in Hawaii are self-policing and are operating without regulatory oversight. Labs are not required to demonstrate appropriate quality assurance for work performed. As a result, the quality of reported data is largely unknown limiting its usefulness for all end users such as environmental groups and public health officials who are making decisions based on such data.

In the near term, the committee plans to take an increasingly active role in engaging state regulators about data quality issues.

News Flash! Article on HWEA Lab Committee activities are highlighted in the Lab Committee Spotlight section of the August/September 2000 issue of Water Environment Laboratory Solutions, WEF.

HWEA SPECIALTY COMMITTEE ROSTERS

COMMITTEE	MEMBERS			
Collection System	Jon Nishimura (Chair)		Tina Ono (Vice-Chair)	
	Roy Abe	Mark Goodrowe	Craig Nishimura	Tom Myers
	Tim Steinberger			
Conference	Leanne Watanabe (Co-Chair)		Greg Chung (Co-Chair)	
	Paul Arita	Jay Hamai	Debra Ikeno	Lynn Katahara
	John Katahira	Ayako Kawabata	Jason Lau	Sheryl Nojima
Constitution & Bylaws	Lee Mansfield (Chair)		Vacant (Vice-Chair)	
Government Affairs	Robin Matsunaga (Chair)		Walter Billingsley (Vice-Chair)	
	George Takamiya			
Laboratory	Barney Asato (Chair)		Anita Fernandez (Vice-Chair)	
	Merlita Empeno	Myron Honda	Snookie Mello	Robert Rychlinski
	Pat Sheppard	Lyle Shizumura	Terrence Tanaka	Lourdes Vasquez
	Bruce Zhang			
Membership	Alma Takahashi (Chair)		Yvonne Miyasato (Vice-Chair)	
Newsletter	Anna Lee (Chair)		Greg Chung (Vice-Chair)	
	Kristie Ching	Suzette Hokama	Jay Stone	
Nominations	Lori Kajiwara (Chair)			
Pretreatment	Dwight Nakao (Chair)		Ken Kawahara (Vice-Chair)	
	Bill Anderson	Ranold Fujioka	Pam Tsugawa	
Public Education	Tim Steinberger (Chair)		Roy Abe (Vice-Chair)	
	Edie Eldeen	Robert Miyasaki	David Nagamine	Joe Padron
	Steve Parabolicoli	Lance Tokuda	Ann Tsuhako	Grace Tuang Moss
Research	Roger Babcock (Chair)		Vacant (Vice-Chair)	
	Roger Fujioka	Denis Lau	Lee Mansfield	Ray Matasci
	Robin Matsunaga	Tim Steinberger	Ross Tanimoto	Ken Tanno
	Dennis Tulang	P.Y. Yang		
Safety	Dan Peters (Chair)			
Student Activities	Ivan Nakatsuka (Chair)			
Water Reuse	Eassie Miller (Co-Chair)		Victor Moreland (Co-Chair)	
	Elson Gushiken	Kenneth Ishizaki	Ray Matasci	Robert Miyasaki
	Peter Ono			

2000-2001 HWEA BOARD OF DIRECTORS AND SPECIALTY COMMITTEES CHAIRS

Lance Manabe, President*

Department of Design & Construction
City & County of Honolulu, 14th Floor
650 South King Street
Honolulu, Hawaii 96813
Phone: 1-808-523-4551, Fax: 1-808-523-4642
E-mail: lmanabe@co.honolulu.hi.us

Steve Parabolicoli, Vice-President*

County of Maui, Wastewater Reclamation Division
200 South High Street
Wailuku, Hawaii 96793
Phone: 1-808-270-7426, Fax: 1-808-270-7425
E-mail: steve.parabolicoli@co.maui.hi.us

Tina Nakasone, Secretary-Treasurer*

Hawaii Pacific Engineers, Inc.
1132 Bishop Street, Suite 1003
Honolulu, Hawaii 96813-2830
Phone: 1-808-524-3771, Fax: 1-808-538-0445
E-mail: tmu@hawaiipacificengineers.com

Lori Kajiwara, Past-President & Nominating Chair*

State of Hawaii, Department of Health
Wastewater Branch
919 Ala Moana Boulevard Room 309
Honolulu, Hawaii 96814
Phone: 1-808-586-4294, Fax: 1-808-586-4300
E-mail: lkajiwara@eha.health.state.hi.us

Victor Moreland, National Director*

1378 Mahiole Street
Honolulu, Hawaii 96819
Phone: 1-808-836-6919, Fax: 1-808-833-2068
E-mail: vdmiao@gte.net

Kevin Nakamura, PWO Representative*

Department of Environmental Services
City & County of Honolulu, Sand Island WWTP
1350 Sand Island Parkway
Honolulu, Hawaii 96819
Phone: 1-808-847-8374, Fax: 1-808-848-6532
E-mail: MDA0094@co.honolulu.hi.us

Jon Nishimura, Collection System Co-Chair

Fukunaga & Associates, Inc.
1388 Kapiolani Boulevard, Second Floor
Honolulu, Hawaii 96814
Phone: 1-808-944-1821, Fax: 1-808-946-9339
E-mail: fainc@aloha.com

Tina Ono, Collection System Co-Chair

Phone: 1-808-523-4067, Fax: 1-808-523-4642

Board of Directors*Leanne Watanabe, Conference Co-Chair**

Hawaii State Department of Health
Clean Water Branch
919 Ala Moana Boulevard, Room 309
Honolulu, Hawaii 96814
Phone: 1-808-586-4142, Fax: 1-808-586-4352
E-mail: lwatanabe@eha.health.state.hi.us

Greg Chung, Conference Co-Chair

Phone: 1-808-488-0477, Fax: 1-808-488-3776
E-mail: engrsol@gte.net

Lee Mansfield, Constitution & Bylaws Chair

GMP Associates, Inc.
1100 Alakea, Suite 1800
Honolulu, Hawaii 96813
Phone: 1-808-521-4711, Fax: 1-808-538-3269
E-mail: gmpassoc@lava.net

Robin Matsunaga, Government Affairs Chair

Belt Collins Hawaii
680 Ala Moana 1st Floor
Honolulu, Hawaii 96813
Phone: 1-808-521-5361, Fax: 1-808-538-7819
E-mail: rmatsunaga@beltcollins.com

Walter Billingsley, Government Affairs Vice-Chair

Phone: 1-808-539-1452, Fax: 1-808-538-7819
E-mail: walter@beltcollins.com

Barney Asato, Laboratory Chair

Department of Environmental Services
City & County of Honolulu, Sand Island WWTP
1350 Sand Island Parkway
Honolulu, Hawaii 96819
Phone: 1-808-847-8356, Fax: 1-808-842-1301
E-mail: yoshi1@gte.net

Anita Fernandez, Laboratory Vice-Chair

Phone: 1-808-879-6109, Fax: 1-808-879-6369

Alma Takahashi, Membership Chair

County of Maui, Wastewater Reclamation Division
200 South High Street
Wailuku, Hawaii 96793
Phone: 1-808-270-7420, Fax: 1-808-270-7425
E-mail: alma.takahashi@co.maui.hi.us

Yvonne Miyasato, Membership Vice-Chair

Phone: 1-808-270-7419, Fax: 1-808-270-7425
E-mail: yvonne.miyasato@co.maui.hi.us

Anna Lee, Newsletter Chair

Engineering Concepts, Inc.
1150 South King Street, Suite 700
Honolulu, Hawaii 96814
Phone: 1-808-591-8820, Fax: 1-808-591-9010
E-mail: eci@gte.net

2000-2001 HWEA BOARD OF DIRECTORS AND SPECIALTY COMMITTEE CHAIRS (Cont.)

Greg Chung, Newsletter Vice-Chair

Phone: 1-808-488-0477, Fax: 1-808-488-3776
E-mail: engrsol@gte.net

Dwight Nakao, Pretreatment Chair

County of Maui, Wastewater Reclamation Division
200 South High Street
Wailuku, Hawaii 96793
Phone: 1-808-270-7988, Fax: 1-808-270-7425

Ken Kawahara, Vice-Chair

Phone: 1-808-527-5377, Fax: 1-808-527-6214

Tim Steinberger, Public Education Chair

Department of Design & Construction
City & County of Honolulu, 14th Floor
650 South King Street
Honolulu, Hawaii 96813
Phone: 1-808-527-5388, Fax: 1-808-527-4642

Roy Abe, Public Education Vice-Chair

Hawaii Pacific Engineers, Inc.
1132 Bishop Street, Suite 1003
Honolulu, Hawaii 96813-2830
Phone: 1-808-524-3771, Fax: 1-808-538-0445
E-mail: rabe@hawaiiapacificengineers.com

Roger Babcock, Jr., Research Chair

University of Hawaii at Manoa
Department of Civil Engineering
2540 Dole Street
Holmes Hall 383
Honolulu, Hawaii 96822
Phone: 1-808-956-7298, Fax: 1-808-956-5014
E-mail: babcock@wiliki.eng.hawaii.edu

Dan Peters, Safety Chair

Department of Environmental Services
City & County of Honolulu, Sand Island WWTP
1350 Sand Island Parkway
Honolulu, Hawaii 96819
Phone: 1-808-847-8327, Fax: 1-808-848-6532

Ivan Nakatsuka, Student Activities Chair

Austin, Tsutsumi & Associates
501 Sumner Street, Suite 521
Honolulu, Hawaii 96817
Phone: 1-808-533-3646, Fax: 1-808-526-1267

Eassie Miller, Water Reuse Co-Chair

Brown and Caldwell
119 Merchant Street, Suite 200
Honolulu, Hawaii 96813-4413
Phone: 1-808-523-8499, Fax: 1-808-533-0226
E-mail: emiller@hawaii.rr.com

Victor Moreland, Water Reuse Co-Chair

Phone: 1-808-836-6919, Fax: 1-808-833-2068

HWEA/WEF CALENDAR OF EVENTS

EVENT	DATE
Summer Lua Line	October 2000
WEFTEC 2000 (Anaheim, CA)	October 14-18, 2000
Tour of the Ewa Water Recycling Facility	October 26, 2000
HWEA Water Reuse Conference (Kailua-Kona, HI)	November 2-3, 2000
7th International Conference on Wetlands System for Water Pollution Control (Lake Buena Vista, Florida)	November 11-16, 2000
Animal Residuals Management (Kansas City, MO)	November 12-14, 2000
Winter Lua Line	January 2001
WEF/AWWA/California WEA Joint Residuals and Biosolids Management Conference (San Diego, California)	February 21-24, 2000
23rd Annual HWEA Conference	March 20-21, 2000
WEF 2001 A Collection Systems Odyssey (Bellevue, Washington)	July 8-11, 2001
Watershed 2001 (Tokyo, Japan)	July 26-27, 2001

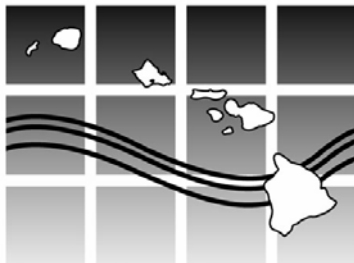
ATTENTION LUA LINE READERS

The *Lua Line* is a publication of the Hawaii Water Environment Association. It is published three times a year, with Spring (April - May), Summer (August - September), and Winter (December - January) issues. Its readership consists of over 400 individuals comprised of consulting and government engineers, wastewater treatment plant operators, laboratory technicians, university research staff, equipment vendors, students, and concerned citizens.

If you are interested in advertising in the *Lua Line*, please contact Anna Lee at 1-808-591-8820 or Greg Chung at 1-808-488-0477.

In This Issue of the Lua Line Volume 13, Number 2

	pg
President's Message	1
Secretary-Treasurer's Report	2
2000 Summer Job Bank	2
News from the National Director	3
PWO News	5
Membership Committee	6
Public Education Committee	8
22nd Annual HWEA Conference Recap	9
Conference Committee	12
New "MYWEF" Website	15
Collection System Committee	16
Student Activities Committee	17
Laboratory Committee	21
Pretreatment Committee	22
HWEA Specialty Committee Rosters	23
HWEA BOD & Specialty Committee Chairs	24
HWEA/WEF Calender of Events	25



HAWAII WATER ENVIRONMENT
ASSOCIATION • SINCE 1962
P.O. Box 2422 • Honolulu, Hawai'i 96804
Internet Address: <http://www.hwea.org>

CHANGE SERVICE REQUESTED

Bulk Rate
U.S. Postage
PAID
Honolulu, Hawaii
Permit No. 258



Printed on recycled paper