

# Lua Line

*A Publication of the Hawaii Water Environment Association*

Volume 18 Number 3

Winter 2005

## PRESIDENT'S MESSAGE

*By Dwight Nakao, 2005-2006 HWEA President*

The year has gone by and I'm proud to say it's been a pleasure to have served as President of HWEA. I've learned a lot as the presiding officer for all the executive board meetings and representing HWEA at luncheons and national meetings. I will always look back at this year with many rewards and very little regrets. Please continue your support to HWEA and get involved with any of the numerous committees or maybe even become an executive officer.

I initially set out to provide opportunities for our members to voice their opinions, enhance the Stockholm Junior Water Prize (SJWP) efforts in Hawaii, and continue the expansion of our annual conference and exposition. Over the year it was a trying experience to accomplish these goals, however, to this end at least progress was achieved. It will take more than a year to create change and hopefully the momentum has started. Even though I'll be the past president, then eventually just another member, I'll do my best to keep these efforts active for the years to come.

Lead by Mr. Kyle Yukumoto, Chair of the Student Activities Committee, the SJWP was very successful, we recognized 7 high school students from Maui and Oahu schools. Congratulations to Ms. April Due and Ms. Aimi La Tore from Kapolei High School, along with teacher Ms. Naidah Gamurot, for being selected as HWEA's State winners. Their project titled, "The Viability of Processing Cruise Ship Waste at a Land-based Wastewater Facility" went on to compete at the National SJWP competition, which was held in Oregon this past August 2005. The National competition was very competitive and we're proud HWEA was represented, although maybe next time we'll have a project that will reach Sweden for the International competition. Spread the word, the SJWP is an annual competition and HWEA will always participate by

selecting a project to represent HWEA in the national competition.

Our annual conference and exposition, which is regularly scheduled in early February of each year, needs your input. This is the largest activity for HWEA and I'd like to see it continue to grow and provide more educational opportunities for not only

the members, but for the community as well. Without input the planning and organization for this event would not be able to reach everyone's interest. We'd particularly like to know if there are comments or suggestions about the location of the annual conference or if there are specific topics you'd like to see presented.



*Dwight Nakao*

A big MAHALO goes out to our 28<sup>th</sup> conference committee members, lead by Mr. Daniel Clark and Ms. Edie Eldeen. The hard voluntary work and dedication from, David Nagamine, Lureen Komoda, Karli Miyata, Cindy Masuoka, Jann Dacanay, Grace Tuang Moss, Taryn Takiguchi, Audrey Uyema Pak, Wade Thode, Theodore Leong, Greg Arakaki, and Joel Frenzel is greatly appreciated. We humbly express our gratitude for your commitments and efforts to put together the 28<sup>th</sup> annual conference and exposition.

HWEA is your organization and we'd like each one of our members to benefit from your membership and take an active part with all the activities provided. Feel free to contact any of the executive board officers with comments or suggestions. If you're really motivated, please join us in any of the numerous committees or get involved in becoming an executive board officer. Once again, thank you for this opportunity to have served you this past year as HWEA's 43<sup>rd</sup> President.

## NEWS FROM THE NATIONAL DIRECTOR

**Ivan Nakatsuka, National Director**

**Ph. 1-808-533-3646, Fax 1-808-526-1267**



*Ivan Nakatsuka*

A funny thing happened on the way to the (Lua Line) forum when I sent Newsletter Chair Kyle Okino my article the last time. The second page got lost in the electronic airwaves. Therefore, I've reserved the second part of this article as a "continuation of", just like the second half of a two-part CSI show. The first part is the more serious business part, to follow mom's advice of work before play.

I left off the last time about the then upcoming WEFTEC in Washington, D.C. Now that it's several weeks after WEFTEC, I'd like to summarize my involvement as your National Director, which is primarily attendance at the Saturday morning and Wednesday afternoon House of Delegates meetings. The hottest topic was a recommendation to sunset the Safety and Public Health Committee. After much discussion, a task force was established to determine if such action should be taken, the results of which are expected anytime now.

I made a special effort to reacquaint myself with Lynn Orphan, who passed the WEF President's gavel

to Michael Read at WEFTEC. You may remember Michael as the visiting WEF officer at last year's HWEA Conference. Getting back to Lynn, the reason I made this special effort is that she will be the visiting WEF officer for this year's HWEA Conference. I have been totally impressed by her leadership qualities and down to earth personality, and invite all of you to meet her at our conference to experience the same.

Now comes the "play" part of my article. Last time, I shared snippets of my 27 years of attending every HWEA Conference so far. If you spring chickens haven't figured it out by now, that famous Frenchman whose song I was quoting was none other than Maurice Chevalier. (Who? Oh man, you young guys.)

As a recap, I mentioned Bill Bonnet chairing the first conference held above the cold ginger chicken introducing Long House. Then there was Mike Chun with \$1 million of pocket change, Wayne Hashiro passing the buck to Dave Yogi and Joe Hanna with his coat and tie. Later year's had Lee Mansfield and his counterpart Chinese chef Mansfield Lee, Tina Ono's primeval yelling of my name and banning me from being an HWEA MC ever again and scholarship recipient Vic Moreland being humble and at a loss for words.

Well here's the rest of what was lost in the electronic airwaves – or maybe subconsciously censored by Kyle. I remember 2001 Conference Co-Chair Greg Chung putting on blue contact lens, strutting across the stage as if he was the Chairman of the Board, and belting out a couple of Frank Sinatra songs at the banquet held in the Regency Room of the Hawaiian Regent Hotel.

I remember throughout the years the comedy duos of Ishizaki and Moreland, Ishizaki and Mansfield and Ishizaki and Manabe entertaining us with their tit for tat antics. Ken must savor being HWEA's perennial punching bag.

I remember the gang from Aqua Engineers always being the last to leave the Waikiki Yacht Club with their battle cry, "Okay, now let's head on down to Keeau-moku Street."

As Maurice would have said, "Ah yes, I remember it well."

### In This Issue of the Lua Line Volume 18, Number 3

	pg
President's Message	1
National Director	2
Conference Committee	3
Student Activities Representative Committee	4
Governmental Affairs Committee	5
Membership Committee	7
HWEA/WEF Calendar of Events	9
2005 Winter Job Bank	9
HWEA BOD & Specialty Committee Chairs	10
HWEA Specialty Committee Roster	12

## CONFERENCE COMMITTEE

**Dan Clark, Conference Co-Chair**  
**Ph. 1-808-270-7423, Fax 1-808-270-7425**  
**Edie Eldeen, Conference Co-Chair**  
**Ph. 1-808-692-5375, Fax 1-808-692-5520**



*Dan Clark*



*Edie Eldeen*

Aloha from Maui fellow HWEA Members,

Your conference co-chairs (myself & Edie) are asking for your participation in the coming February 2006 conference. It will be here soon, and it seems we're aboard the bullet train. Kulia iK Nu'u "In Search of Excellence", A Meeting of the Minds. Wow! Powerful and that's what we have in store for all of you. Your conference chairs have done a fabulous job. We want as many of you to participate as your schedules will allow. We look forward to you sharing your manao (knowledge & experience) with all of your co-attendees.

There will be a great line up of presentations expanded to three full tracks, as well as exhibitors for your enrichment. Award nominations, president's reception, challenge teams, all expertly presented for your enjoyment. Friday evening, Feb. 10th, is our prime rib banquet dinner with entertainment and door prizes.

Don't forget, we will have a session in room 317A on Friday, Feb. 10th from 4:15 to 4:45, an open HWEA Board Meeting where you may ask questions and submit suggestions.

The PWOs continued existence can be ensured by your expressions as well as more outer island brown bag get togethers. Create a time, grab some steaks and refreshments and meet at da beach park, yeh! Let's talk about how we can keep the Operator's licenses in positions at the administrative levels in our plant operations sections. Combine that with training classes designed to make us all qualified operators, then our Personnel Departments must be inclined to not remove licenses from positions and now would have a qualified bank of licensed operators to select from. Together we can solidify this goal statewide, our career paths. Let's talk more about it at the conference board session, ok!

Edie and I would like to wish all of you a fabulous and healthful 2006. See you at the Wastewater Hoolaulea (2006 HWEA Conference).

Dan Clark  
 HWEA Conference Co-chair

### MEMBER SERVICE E-MAIL

**[misc@wef.org](mailto:misc@wef.org) address changes, membership inquiries, subscription inquiries, or anything related to membership**

**[pubs@wef.org](mailto:pubs@wef.org) order publications, check on order status, price quotes**

**[confinfo@wef.org](mailto:confinfo@wef.org) registration questions and requests for conference information**

**[techniq@wef.org](mailto:techniq@wef.org) technical questions**

**[webfeedback@wef.org](mailto:webfeedback@wef.org) your comments about our website**



900 HALEKAUWILA STREET  
 HONOLULU, HAWAII 96814  
 (808) 591-8116 (Honolulu)  
 (808) 885-4590 (Kamuela)  
 FAX: (808) 593-8101  
 website: [www.esh-inc.com](http://www.esh-inc.com)

## STUDENT ACTIVITIES REPRESENTATIVE COMMITTEE

**Kyle Yukumoto, Committee Chair**  
Ph. 1-808-842-1133, Fax 1-808-842-1937



*Kyle Yukumoto*

HWEA 2006 SCHOLARSHIP AND STUDENT POSTERS WILL BE FEATURED AT THE CONFERENCE

Happy New Year Everyone!

This year, HWEA will be financially assisting up to two well-deserving students by awarding them with scholarships of up to \$2,000. Scholarships will be determined by the Executive Committee and will be based on merit, academic standing, leadership, financial need, and curriculum of study (water environment and/or public health). This scholarship was advertised in the last Lua Line and was available on the HWEA website. The winner(s) will be announced on Friday, February 10, 2005, at the Annual Conference Luncheon.

Poster boards as presented by the University of Hawaii students will also be judged and awarded (top three) at the Conference Luncheon. These water quality posters provide educational and informative summaries of our future member's projects. The students will also be available throughout the day to discuss their projects, answer questions, and discuss

their future plans.

### STOCKHOLM JUNIOR WATER PRIZE

Over the past several years, HWEA's participation in the Stockholm Junior Water Prize (SJWP) has provided opportunities for local high school students to compete on the mainland. Our students have placed within the top four at this national level. This year, the Student Activities Committee and Public Education Committee will once again be involved in selecting a high school student to represent Hawaii at the National Stockholm Junior Water Prize (SJWP) competition in Atlanta, Georgia, June 22-24. The committees will be selecting a regional winner from an affiliated International Science and Engineering Fair (ISEF) which includes the Windward District Science and Engineering Fair (SEF), the Leeward District SEF, the Maui Schools SEF, the Hawaii Association of Independent Schools SEF, and the Hawaii State SEF. One of these regional winners will be selected by the committees as the state winner to represent Hawaii at the national competition. This state winner will receive \$250 and an all expense paid trip to Atlanta, Georgia for this national competition. Once selected at the national level (cash award of \$3,000, a sculpture award, and all expense paid trips to Stockholm, Sweden and WEFTEC 2006), the student will have a chance to compete for \$5,000 during World Water Week in Stockholm, Sweden, August 20-26, 2006. (For additional information on this prestigious water event, please visit <http://www.wef.org/publicinfo/stockholm>).



## GOVERNMENT AFFAIRS COMMITTEE

**Robin Matsunaga, Committee Chair**  
**Ph. 1-808-521-3051, Fax 1-808-524-0246**  
**Walter Billingsley, Vice-Chair**  
**Ph. 1-808-521-5361, Fax 1-808-538-7819**



*Robin Matsunaga*



*Walter Billingsley*

### Proposed Policy on Peak Wet Weather Discharges from Municipal Sewage Treatment Plants

In the December 22, 2005 Federal Register, EPA proposed for public comment a new policy for addressing very high or "peak" flow events at municipal wastewater treatment plants that are a result of significant storm events. The policy follows the joint recommendations of the Natural Resources Defense Council (NRDC) and the National Association of Clean Water Agencies (NACWA) and is designed to provide greater national consistency while still incorporating flexibility to recognize site-specific issues. Comments are due on or before January 23, 2006.

Aging sewer line infrastructure in many communities allows rain and snowmelt to enter sanitary sewer systems. During significant storm events, these high volumes can overwhelm certain parts of the wastewater treatment process and may cause damage or failure of the system. Operators of wastewater treatment plants must manage these high flows to both ensure the continued operation of the treatment process and to prevent backups and overflows of raw wastewater in basements or on city streets.

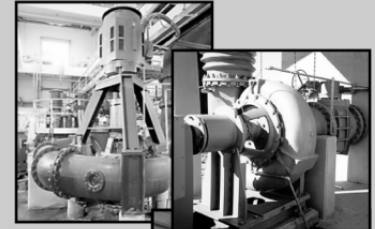
The proposed Peak Wet Weather policy is substantially different from the November 2003 proposed "blending" policy. The proposed policy:

- Outlines the limited circumstances when certain management techniques can be used and how they must be documented in NPDES permits.

## SOLIDS HANDLING PUMPS



*Dry-Pit and Submersible Solids-Handling Pumps for discerning users worldwide...*



ISO9001:2000

**Yeomans Pump**  
**3905 Enterprise Court - P.O. Box 6620 Aurora, IL 60598-0620**  
**PH: 630-236-5500 FX: 630-236-5511 www.yeomanspump.com**

- Stipulates that all NPDES permit limits must be met at all times and that operators demonstrate that all feasible measures are used to minimize wet weather problems.
- Prohibits the use of these peak flow management techniques in systems where high peak flows are due to poor system maintenance or a lack of investment in upgrades to improve treatment capacity.
- Encourages further public participation via the National Pollutant Discharge Elimination System (NPDES) permit process, and provides for public notification when certain management techniques are used.

Encourages municipalities to make investments in ongoing maintenance and capital improvements to improve their system's long-term performance.

The December 22, 2005 Federal Register Notice can be found at [http://www.epa.gov/npdes/pubs/fr\\_peak\\_wet\\_weather\\_policy.pdf](http://www.epa.gov/npdes/pubs/fr_peak_wet_weather_policy.pdf). A Fact Sheet can be found at [http://www.epa.gov/npdes/pubs/peak\\_wet\\_weather\\_fs.pdf](http://www.epa.gov/npdes/pubs/peak_wet_weather_fs.pdf).

*(Continued on page 6)*

(Continued from page 5)

### **Clean Water Trust Fund Bill Introduced in House**

On December 15, 2005, Representative John J. Duncan, Jr. (R-TN), Chairman of the House Transportation and Infrastructure Subcommittee on Water Resources and Environment, introduced the Clean Water Trust Act of 2005, H.R. 4560. The bill reauthorizes the funding portion of the Clean Water Act and sets up a federal trust fund to provide approximately \$7.5 billion a year for five years to local communities to address clean water infrastructure needs. The bill creates a dedicated, deficit-neutral Clean Water Trust Fund, similar to those that finance highways and airports.

Annually, States will award the first \$1.5 billion from the trust fund to municipalities through state water pollution control revolving funds. Another \$4.5 billion a year from the trust fund then will be awarded in the form of High Priority Partnership Grants to municipalities, via 65%-35% federal-

municipal cost share financing to projects that "address the most serious water pollution problems; are necessary to ensure compliance with the requirements of the [Clean Water Act]; or, benefit communities with the greatest need". The revenue source for the trust fund requires the EPA Administrator to submit to Congress within 180 days an equitable system of user fees. This language may be replaced before final passage of the bill with specific user fees.

H.R. 4560 also includes annual allocations in the amounts of \$250 million for sewer overflow grants, \$20 million for watershed pilot projects, \$250 million for critical regional waters, \$295 million for research and technology, \$250 million for fisheries enhancement, \$100 million for state wetlands programs, \$50 million for small and rural technological assistance and \$5 million for a Center for Utility Management.



**R. M. TOWILL CORPORATION**

Planning • Landscape Architecture • Engineering • Environmental Engineering  
Photogrammetry • Surveying • Construction Management

Serving Hawaii's Wastewater and Water Needs  
Since 1930

Waiakamilo Business Center  
420 Waiakamilo Road Suite 411  
Honolulu Hawaii 96817-4941  
phone: 808-842-1133  
fax: 808-842-1937

Visit us on the web at [www.rmtowill.com](http://www.rmtowill.com)

**Sand Island WWTP Expansion**  
Island of Oahu - 2005

**Makena WWTP**  
Island of Maui - 2002

**Keahole WWTP**  
Island of Hawaii - 2001

## MEMBERSHIP COMMITTEE

**Alma Takahashi, Committee Chair**  
**Ph. 1-808-270-7420, Fax 1-808-270-7425**  
**Yvonne Miyasato, Vice-Chair**  
**Ph. 1-808-270-7419, Fax 1-808-270-7425**

The HWEA would like to welcome the following new members:

Wayne Hashiro	Ryan Uwono
Christopher Caldeira	Ferd Jaramilla
Guy Inouye	Patrick Suzuki
Steven Shinsato	Rick Fontes
Clint Saiki	Eric Arakawa
Stephen Mondina	Efren Alano
Lauren Ishima	John Farmer
Herman Ellis	Steven Lum
Alfred Derige, Jr	Zhijun Zhou
Jared Lum	Joy Ho

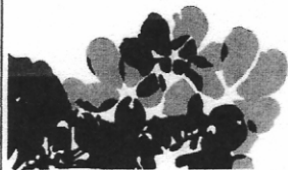
### HWEA MEMBERSHIP STATUS AS OF DECEMBER 9, 2005

Category	Members
Active	192
PWOD	141
Corporate	5
Half-Life Active/Retired	13
Life	7
Student	3
Retired	3
<b>Total</b>	<b>364</b>

## FUKUNAGA & ASSOCIATES, INC.

*Consulting Engineers ~ Civil ~ Environmental ~ Sanitary*

1388 Kapiolani Boulevard, 2nd Floor  
Honolulu, Hawaii 96814



Telephone: (808) 944-1821  
 Fax: (808) 946-9339  
 E-mail: office@fainc.org  
 Internet: http://www.fainc.org



ENVIRONMENTAL ENGINEERING  
AND CONSULTING

119 Merchant Steet, Suite 200, Honolulu, Hawaii 96813  
808-523-8499, 808-533-0226 Fax

Wells Street Professional Center  
2145 Wells Street, Suite 302, Wailuku, Hawaii 96793  
808-244-7005, 808-244-9026 Fax

www.browncaldwell.com

Providing environmental solutions in:  
**Wastewater Collection, Treatment  
 and Disposal**  
**Water Reuse**  
**Watershed Management**  
**Water Supply**  
**Infrastructure**  
**Solid Waste**  
**Hazardous Waste**



*Alma Takahashi*



*Yvonne Miyasato*

### CHANGE YOUR ADDRESS ONLINE

Changes to your mailing/e-mail address and phone/fax number can be done through the WEF website at [www.wef.org](http://www.wef.org):

Enter membership ID - use full membership ID of 8 characters (if it's a 7 digit ID, please add a leading zero (0) at the beginning)

Enter password - if never logged in before, it will be the first 15 characters of the last name, or the first 15 characters of the company name for corporate members

Click on the following:

- Membership & Professional Services
- Membership Information
- Join/General Info
- I want to join WEF now
- My membership info
- Change address

Update the information and submit the record

Or, you could inform the Membership Committee of any changes so you can continue to receive local and national publications and information.

---

---

**21ST ANNUAL WATER REUSE SYMPOSIUM  
WATER REUSE & DESALINATION: MILE-HIGH OPPORTUNITIES**

Hollywood Renaissance Hotel  
Hollywood, California, USA  
10-13 September, 2006

The Water Environment Federation, the Water Reuse Association, and the American Water Works Association, invite you to attend and participate in the 21st annual Water Reuse Symposium- the world's preeminent conference devoted to water reuse and desalination.

Abstracts are due 1 February, 2006

**Abstract Subject Areas- Water Reuse**

- Agricultural reuse
- Conveyance and distribution system design, operation, and cross-connection control
- Disinfection
- Public education and outreach
- Environmental enhancement reuse
- Financing, pricing, rates, and economics
- Health effects and risk assessment
- Industrial reuse
- Operations and operator issues
- Planning for water reuse
- Indirect potable reuse and ground water recharge
- Regulatory, institutional, and legal issues
- Storage issues, including aquifer storage and recovery
- Treatment technologies
- Urban reuse, golf courses, parks, landscape, residential
- Innovative reuse applications
- Water quality issues

**Abstract Subject Areas - Desalination**

- Desalination - Concentrate/brine management
- Desalination - Environmental concerns
- Desalination - Financing, economics, & rates
- Desalination - Pretreatment
- Desalination - Technologies

**Important Dates**

February 1, 2006 - Abstracts due.  
March 10, 2006 - Authors notified.  
June 9, 2006 - Papers due.  
August 18, 2006 - PowerPoint presentations due.

**For more information, please contact:**

Amy Kirson  
Conference and Membership Manager  
Water Reuse Association  
635 Slaters Lane, 3rd Floor  
Alexandria, VA 22314  
P:(703) 684-2409 x2  
E: akirson@watereuse.org

---

---

## HWEA/WEF CALENDAR OF EVENTS

EVENT	DATE
28th Annual HWEA Conference and Exposition	February 8 - 10, 2006
32nd Annual AWWA Hawaii Section Conference Ilikai Renaissance Hotel, Waikiki	May 9 - 12, 2006
HWEA Summer <i>Lua Line</i>	September 2006
21st Annual WaterReuse Symposium Hollywood, California	September 10 - 13, 2006
WEFTEC 2006 Dallas, Texas	October 21 - 25, 2006
HWEA Water Reuse Conference	November 2006
HWEA Winter <i>Lua Line</i>	January 2007



**BILLS ENGINEERING INC.**  
*Civil/Environmental Engineering*

1124 Fort Street Mall, Suite 200  
Honolulu, Hawai'i 96813-2715  
Telephone: 808.792.2022  
Facsimile: 808.792.2033  
General Email: [info@BillsEngineering.com](mailto:info@BillsEngineering.com)



Fairway Villas - Waikoloa



Ka'elepulu Reconstructed Wetlands

### 2005 WINTER JOB BANK

For vacancy announcements for the **City and County of Honolulu**, please call the Department of Human Resources at (808) 523-4302.

For vacancy announcement for the **County of Hawaii**, please call the 24-hour Job Hotline at (808) 934-0185.

For vacancy announcements for the **County of Kauai**, please call the Department of Public Works at (808) 241-6610.

For vacancy announcements for the **County of Maui**, please call Carol Kurisu of the Department of Personnel Services at (808) 270-7850.

## 2005-2006 HWEA BOARD OF DIRECTORS AND SPECIALTY COMMITTEE CHAIRS

**Dwight Nakao**  
**President\***

State Department of Accounting &  
General Services  
755 Mua Street  
Kahului, Hawaii 96732  
**Ph. 877-3305, Fax 243-5771**  
wwpretreat@yahoo.com

**June Nakamura**  
**Vice-President\***

Engineering Solutions, Inc.  
98-1268 Kaahumanu Street, Ste C-7  
Pearl City, Hawaii 96782  
**Ph. 488-0477, Fax 488-3776**  
june@engrsol.com

**John Katahira**  
**Secretary-Treasurer\***

The Limtiaco Consulting Group  
650 Iwilei Road, Suite 208  
Honolulu, Hawaii 96782  
**Ph. 596-7790, Fax 596-7361**  
john@tlcgohawaii.com

**Kristie Ching**  
**Past President/Nominating Chair\***

City & County of Honolulu  
Dept of Design & Construction  
Wastewater Division  
650 South King St, 14th Floor  
Honolulu, Hawaii 96813  
**Ph. 527-5158, Fax 523-4642**  
kching1@honolulu.gov

**Ivan Nakatsuka**  
**National Director\***

Austin, Tsutsumi & Associates, Inc.  
501 Sumner Street, Suite 521  
Honolulu, Hawaii 96817  
**Ph. 533-3646 Fax 526-1267**  
inakatsuka@atahawaii.com

(\*) = HWEA Executive Board  
Members

**Jerry Morgan**  
**PWO Representative\***

County of Maui  
Wastewater Reclamation Division  
480 Welakahao Rd  
Kihei, HI 96753  
**Ph. 879-6109 x208, Fax 879-6369**  
jerry.morgan@co.maui.hi.us

**Jon Nishimura**  
**Collection Systems Chair**

Fukunaga & Associates, Inc.  
1388 Kapiolani Blvd., 2nd floor  
Honolulu, Hawaii 96814  
**Ph. 944-1821, Fax 946-9339**  
jnishimura@fainc.org

**Tina Ono**  
**Collection Systems Vice-Chair**

**Ph. 523-4067, Fax 523-4642**  
tono@honolulu.gov

**Dan Clark**  
**Conference Co-Chair**

County of Maui  
200 South High Street  
Wailuku, HI 96793  
**Ph. 270-7423, Fax 270-7425**  
dan.clark@co.maui.hi.us

**Edie Eldeen**  
**Conference Co-Chair**  
**Ph. 692-5375, Fax 692-5520**  
eeldeen@honolulu.gov

**Robin Matsunaga**  
**Government Affairs Chair**

Belt Collins Hawaii  
2135 N King Street Suite 200  
Honolulu, Hawaii 96819  
**Ph. 521-5361, Fax 538-7819**  
rmatsunaga@beltcollins.com  
**Walter Billingsley**  
**Government Affairs Vice-Chair**  
**Ph. 521-5361, Fax 538-7819**  
wbillingsley@beltcollins.com

**Barney Asato**  
**Laboratory Chair**

City & County of Honolulu  
Dept. of Environmental Services  
1000 Uluohia Street, Suite 308  
Kapolei, Hawaii 96707  
**Ph. 692-5354, Fax 692-5113**  
basato@honolulu.gov

**Anita Fernandez**  
**Laboratory Vice-Chair**  
**Ph. 879-6109 ext. 213, Fax 879-6369**  
anita.fernandez@co.maui.hi.us

**Alma Takahashi**  
**Membership Chair**

County of Maui  
Wastewater Reclamation Division  
200 South High Street  
Wailuku, Hawaii 96793  
**Ph. 270-7420, Fax 270-7425**  
alma.takahashi@co.maui.hi.us

**Yvonne Miyasato**  
**Membership Vice-Chair**  
**Ph. 270-7419, Fax 270-7425**  
yvonne.miyasato@co.maui.hi.us

**Kyle Okino**  
**Newsletter Chair**

Engineering Solutions, Inc.  
98-1268 Kaahumanu Street, Suite C-7  
Pearl City, Hawaii 96782  
**Ph. 488-0477, Fax 488-3776**  
engineering@engrsol.com

**Ken Kawahara**  
**Pretreatment Chair**

City & County of Honolulu  
Dept of Environmental Services  
1000 Uluohio Street, Suite 303  
Kapolei, Hawaii 96707  
**Ph. 692-5377, Fax 550-6942**  
kkawahara@co.honolulu.hi.us

## 2005-2006 HWEA BOARD OF DIRECTORS AND SPECIALTY COMMITTEE CHAIRS (continued)

**James Baginski**

**Public Education Chair**

City & County of Honolulu  
Dept of Environmental Services  
1000 Uluohia Street, Suite 308  
Kapolei, Hawaii 96707  
**Ph. 527-6692, Fax 531-8007**  
jbaginski@co.honolulu.hi.us

**Eassie Miller**

**Water Reuse Chair**

Brown & Caldwell  
119 Merchant Street, Suite 200  
Honolulu, Hawaii 96813  
**Ph. 523-8499, Fax 533-0226**  
emiller@brwnncald.com

**Roger Babcock, Jr.**

**Research Chair**

University of Hawaii, Manoa  
College of Engineering  
Department of Civil Engineering  
2450 Dole Street, Holmes Hall 383  
Honolulu, Hawaii 96822  
**Ph. 956-7298, Fax 956-5014**  
rbabcock@hawaii.edu

**Russell Okita**

**Web Page Co-Chair**

Hawaii Pacific Engineers  
1132 Bishop Street, Suite 1003  
Honolulu, Hawaii 96813  
**Ph. 524-3771, Fax 538-0445**  
info@hwea.org

**Mark Goodrowe**

**Web Page Co-Chair**

**Ph. 543-2021, Fax 543-2022**  
mgoodrowe@insituform.com

**Kyle Yukumoto**

**Student Activities Chair**

R.M. Towill Corporation  
420 Waiakamilo Road, Suite 411  
Honolulu, Hawaii 96817  
**Ph. 842-1133, Fax 842-1937**  
kyley@rmtowill.com

**Lee Mansfield**

**Constitution & Bylaws Chair**

Hawaii-American Water Company  
PO Box 25010  
Honolulu, Hawaii 96825  
**Ph. 394-1285, Fax 395-5023**  
lmansfie@amwater.com

---

## 2005-2006 HWEA SPECIALTY COMMITTEE ROSTER

COMMITTEE	COMMITTEE MEMBERS		
<b>Collection Systems</b>	Jon Nishimura (Chair) Roy Abe Billy Atiz James Baginski Warren Banao Walter Chong John Dai	Tina Ono (Vice-Chair) Mark Goodrowe Jeff Iwasaki-Higbee Lyle Tabata Joy Ho Travis Hylton	Scott Kunioka Lance Manabe Tom Myers Tim Steinberger Tracy Takamine
<b>2006 Conference</b>	Dan Clark (Co-Chair) Greg Arakaki Jann Dacanay Joel Frenzel Lureen Komoda Cindy Masuoka	Edie Eldeen (Co-Chair) Karli Miyata Grace Moss David Nagamine Dwight Nakao	Taryn Takiguchi Wade Thode Audrey Uyema Theo
<b>Constitution and Bylaws</b>	Lee Mansfield (Chair)		
<b>Government Affairs</b>	Robin Matsunaga (Chair) Denis Lau	Walter Billingsley (Vice-Chair) David Nagamine	Gayle Takasaki
<b>Laboratory</b>	Barney Asato (Co-Chair) Lytha Conquest Merlita Empeno Leila Kamakele Jacqueline "Snookie" Mello	Anita Fernandez (Co-Chair) Robert Rychlinski Pat Sheppard Lyle Shizumura	Terrence Tanaka Lourdes Vazquez Bruce Zhang
<b>Membership</b>	Alma Takahashi (Chair)	Yvonne Miyasato (Vice-Chair)	
<b>Newsletter</b>	Kyle Okino (Chair) Jay Stone	Cheryl Kaneshiro-Takeuchi	Taryn Takiguchi
<b>Pretreatment</b>	Ken Kawahara (Chair) Bill Anderson Edie Eldeen	Ranold Fujioka Henry Gabriel	Dwight Nakao June Nakamura
<b>Public Education</b>	James Baginski (Chair) Roy Abe Kai Andrade Lori "Kaj" Morikami	Steve Parabolicoli Grace Tuang Moss Ken Windram	Kyle Yukumoto John Witeck Tim Steinberger
<b>Research</b>	Roger Babcock (Chair)		
<b>Student Activities</b>	Kyle Yukumoto (Chair)		
<b>Water Reuse</b>	Eassie Miller (Chair) Clayton Brown Elson Gushiken Ken Ishizaki	Victor Moreland Peter Ono	Steve Parabolicoli Ken Windram
<b>Web Page</b>	Russell Okita (Chair) Jennifer Honda	Mark Goodrowe (Vice-Chair) David Paul	

**Since 1959 ...  
Total Project Delivery  
From Concept to Construction**

**Civil Engineering and Design  
Environmental Engineering  
Water Treatment and Supply  
Wastewater Collection and Treatment  
Hazardous Waste Remediation  
Construction Management  
Surveying**

**HONOLULU**

841 Bishop Street, Suite 1900, Honolulu, HI 96813  
T 808.521.3051 F 808.524.0246

**HILO**

100 Pauahi Street, Suite 207, Hilo, HI 96720  
T 808.961.2776 F 808.935.5934

**MAUI**

1885 Main Street, Suite 406, Wailuku, HI 96793

# M&E Pacific, Inc.

**METCALF & EDDY** | AECOM

[www.m-e.aecom.com](http://www.m-e.aecom.com)



**HAWAII WATER ENVIRONMENT  
ASSOCIATION** ● Since 1962  
P.O. Box 2422 ♦ Honolulu, Hawaii 96804

*CHANGE SERVICE REQUESTED*

**Presorted  
Standard  
US Postage Paid  
Honolulu, Hawaii  
Permit No. 169**



*Printed on recycled paper*